

Product datasheet for **AP53410PU-N**

PPIC (Center) Rabbit Polyclonal Antibody

Product data:

Product Type:	Primary Antibodies
Applications:	FC, IHC, WB
Recommended Dilution:	ELISA: 1/1000. Western Blot: 1/100-1/500. Immunohistochemistry on Paraffin Sections: 1/50-1/100.
Reactivity:	Human
Host:	Rabbit
Isotype:	Ig
Clonality:	Polyclonal
Immunogen:	KLH conjugated synthetic peptide between 68-97 amino acids from the Center region of Human Cyclophilin C.
Specificity:	This antibody recognizes Human Cyclophilin C (Center).
Formulation:	PBS containing 0.09% (W/V) Sodium Azide as preservative State: Aff - Purified State: Liquid purified Ig fraction
Concentration:	lot specific
Purification:	Affinity Chromatography on Protein A
Conjugation:	Unconjugated
Storage:	Store undiluted at 2-8°C for one month or (in aliquots) at -20°C for longer. Avoid repeated freezing and thawing.
Stability:	Shelf life: one year from despatch.
Gene Name:	peptidylprolyl isomerase C
Database Link:	Entrez Gene 5480 Human P45877
Background:	PPIC is a member of the peptidyl-prolyl cis-trans isomerase (PPIase) family. PPIases catalyze the cis-trans isomerization of proline imidic peptide bonds in oligopeptides and accelerate the folding of proteins. Similar to other PPIases, this protein can bind immunosuppressant cyclosporin A.



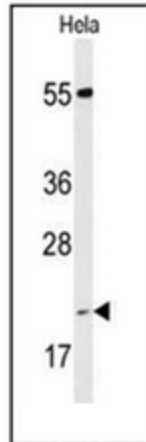
[View online »](#)

Synonyms: PPlase C, Rotamase C, PPIC, CYPC

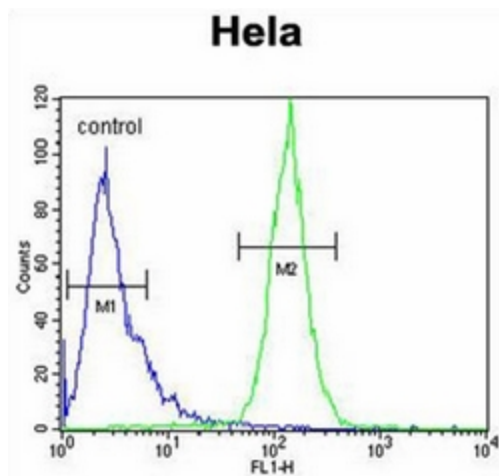
Note: **Molecular Weight:** 22763 Da

Protein Families: Transmembrane

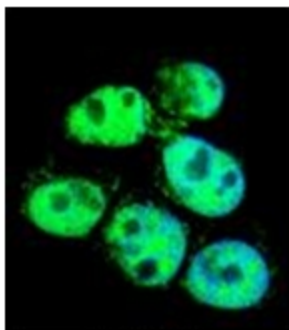
Product images:



Western blot analysis of PPIC Antibody (Center) in HeLa cell line lysates (35ug/lane). PPIC (arrow) was detected using the purified Pab.



Formalin-fixed and paraffin-embedded human brain tissue reacted with PPIC Antibody (Center), which was peroxidase-conjugated to the secondary antibody, followed by DAB staining.



Flow cytometric analysis of HeLa cells using PPIC Antibody (Center) (right histogram) compared to a negative control cell (left histogram). FITC-conjugated goat-anti-rabbit secondary antibodies were used for the analysis.