

Product datasheet for **AP53406PU-N**

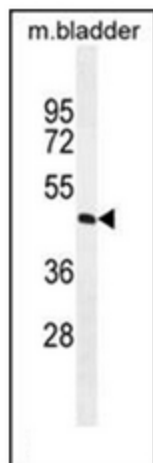
PPAPDC1A (PLPP4) (N-term) Rabbit Polyclonal Antibody

Product data:

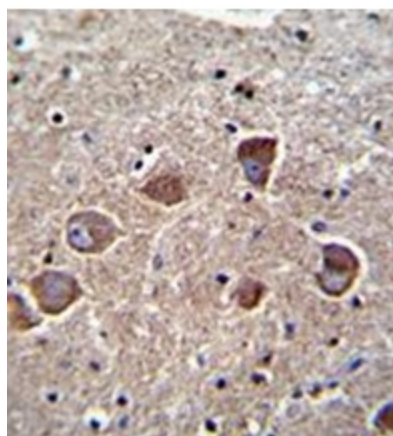
Product Type:	Primary Antibodies
Applications:	IHC, WB
Recommended Dilution:	ELISA: 1/1000. Western Blot: 1/100-1/500. Immunohistochemistry on Paraffin Sections: 1/10-1/50.
Reactivity:	Human, Mouse
Host:	Rabbit
Isotype:	Ig
Clonality:	Polyclonal
Immunogen:	KLH conjugated synthetic peptide between 13-42 amino acids from the N-terminal region of Human PPAPDC1A
Specificity:	This antibody recognizes Human and Mouse PPAPDC1A (N-term).
Formulation:	PBS containing 0.09% (W/V) Sodium Azide as preservative State: Aff - Purified State: Liquid purified Ig fraction
Concentration:	lot specific
Purification:	Affinity Chromatography on Protein A
Conjugation:	Unconjugated
Storage:	Store undiluted at 2-8°C for one month or (in aliquots) at -20°C for longer. Avoid repeated freezing and thawing.
Stability:	Shelf life: one year from despatch.
Gene Name:	phospholipid phosphatase 4
Database Link:	Entrez Gene 381925 Mouse Entrez Gene 196051 Human Q5VZY2
Synonyms:	DPPL2, PPAPDC1
Note:	Molecular Weight: 30395 Da
Protein Families:	Transmembrane



[View online »](#)

Product images:

Western blot analysis of PPAPDC1A Antibody (N-term) in mouse bladder tissue lysates (35ug/lane). This demonstrates the PPAPDC1A Antibody detected the PPAPDC1A protein (arrow)



Formalin fixed and paraffin embedded human brain tissue reacted with PPAPDC1A Antibody (N-term) followed by peroxidase conjugation of the secondary antibody and DAB staining.