

Product datasheet for **AP53404PU-N**

PPP1R14C (C-term) Rabbit Polyclonal Antibody

Product data:

Product Type:	Primary Antibodies
Applications:	IHC, WB
Recommended Dilution:	ELISA: 1/1000. Western Blot: 1/100-1/500. Immunohistochemistry on Paraffin Sections: 1/10-1/50.
Reactivity:	Human, Mouse
Host:	Rabbit
Isotype:	Ig
Clonality:	Polyclonal
Immunogen:	KLH conjugated synthetic peptide between 133-163 amino acids from the C-terminal region of human PP1R14C.
Specificity:	This antibody recognizes Human and Mouse PP1R14C (C-term).
Formulation:	PBS containing 0.09% (W/V) Sodium Azide as preservative State: Aff - Purified State: Liquid purified Ig fraction
Concentration:	lot specific
Purification:	Affinity Chromatography on Protein A
Conjugation:	Unconjugated
Storage:	Store undiluted at 2-8°C for one month or (in aliquots) at -20°C for longer. Avoid repeated freezing and thawing.
Stability:	Shelf life: one year from despatch.
Gene Name:	protein phosphatase 1 regulatory inhibitor subunit 14C
Database Link:	Entrez Gene 76142 Mouse Entrez Gene 81706 Human Q8TAE6



[View online »](#)

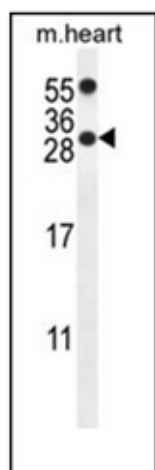
Background: The degree of protein phosphorylation is regulated by a balance of protein kinase and phosphatase activities. Protein phosphatase-1 (PP1; see MIM 176875) is a signal-transducing phosphatase that influences neuronal activity, protein synthesis, metabolism, muscle contraction, and cell division. PPP1R14C is an inhibitor of PP1 (Liu et al., 2002 [PubMed 11812771]). [supplied by OMIM].

Synonyms: KEPI, NY-BR-81

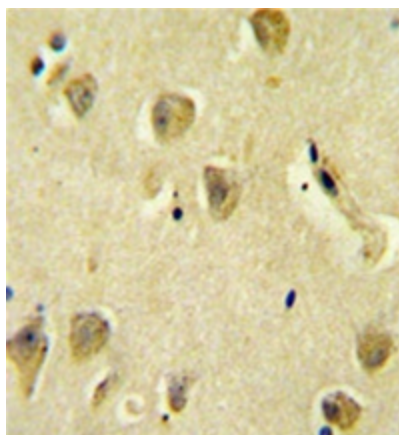
Note: **Molecular Weight:** 17843 Da

Protein Families: Druggable Genome

Product images:



Western blot analysis of PP1R14C Antibody (C-term) in mouse heart tissue lysates (35ug/lane). This demonstrates the PP1R14C antibody detected the PP1R14C protein (arrow).



Formalin fixed and paraffin embedded human brain tissue reacted with PP1R14C Antibody (C-term) followed by peroxidase conjugation of the secondary antibody and DAB staining.