

## Product datasheet for **AP53401PU-N**

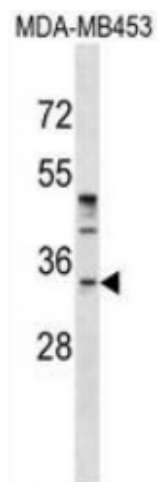
### **POU6F1 (N-term) Rabbit Polyclonal Antibody**

#### **Product data:**

Product Type:	Primary Antibodies
Applications:	WB
Recommended Dilution:	<b>ELISA:</b> 1/1000. <b>Western blotting:</b> 1/100 - 1/500.
Reactivity:	Human
Host:	Rabbit
Isotype:	Ig
Clonality:	Polyclonal
Immunogen:	KLH conjugated synthetic peptide between 55-85 amino acids from the N-terminal region of human POU6F1
Formulation:	PBS with 0.09% (W/V) sodium azide State: Aff - Purified State: Liquid purified Ig fraction
Concentration:	lot specific
Purification:	Protein A column, followed by peptide affinity purification
Conjugation:	Unconjugated
Gene Name:	POU class 6 homeobox 1
Database Link:	<a href="#">Entrez Gene 5463 Human Q14863</a>
Background:	Transcription factor that binds preferentially to a variant of the octamer motif (5'-ATGATAAT-3') (By similarity).
Synonyms:	BRN5, MPOU, TCFB1, Brain-5, Brn-5
Note:	<b>Molecular Weight:</b> 32645 Da
Protein Families:	Transcription Factors



[View online »](#)

**Product images:**

Western blot analysis in MDA-MB453 cell line lysates (35ug/lane) demonstrates that purified POU6F1 antibody no. detects POU6F1 protein (arrow).