

Product datasheet for **AP53397PU-N**

BOB1 (POU2AF1) (N-term) Rabbit Polyclonal Antibody

Product data:

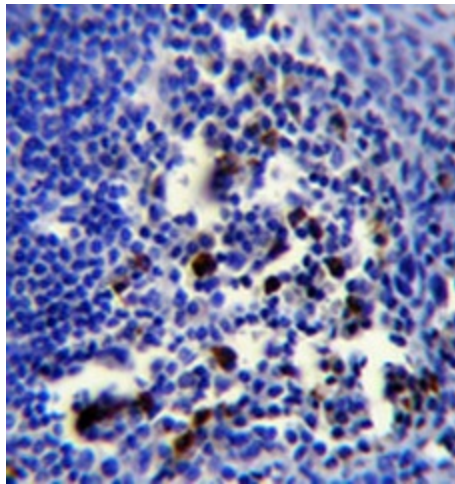
Product Type:	Primary Antibodies
Applications:	FC, IHC, WB
Recommended Dilution:	ELISA: 1/1000 Western blotting: 1/100 - 1/500 Flow cytometry: 1/10 - 1/50 Immunohistochemistry: 1/10 - 1/50
Reactivity:	Human
Host:	Rabbit
Isotype:	Ig
Clonality:	Polyclonal
Immunogen:	KLH conjugated synthetic peptide between 7~36 amino acids from the N-terminal region of human POU2AF1
Specificity:	This antibody recognizes human POU2AF1.
Formulation:	PBS with 0.09% (W/V) sodium azide State: Aff - Purified State: Liquid purified Ig fraction
Concentration:	lot specific
Purification:	Protein A column, followed by peptide affinity purification
Conjugation:	Unconjugated
Storage:	Store the antibody undiluted at 2-8°C for one month or (in aliquots) at -20°C for longer. Avoid repeated freezing and thawing.
Stability:	Shelf life: one year from despatch.
Gene Name:	POU class 2 associating factor 1
Database Link:	Entrez Gene 5450 Human Q16633
Synonyms:	OBF1, OBF-1, OCA-B, OCAB
Note:	Molecular Weight: 27436 Da



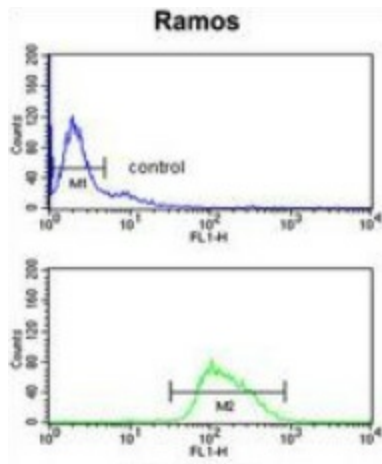
[View online »](#)

Product images:


Western blot analysis of POU2AF1 antibody (N-term) no. in Ramos cell line lysates (35ug/lane). POU2AF1 (arrow) was detected using the purified Pab.



Immunohistochemistry analysis in formalin fixed and paraffin embedded human tonsil tissue followed by peroxidase conjugation of the secondary antibody and DAB staining. This data demonstrates the use of POU2AF1 Antibody (N-term) no. for immunohistochemistry. Clinical relevance has not been evaluated.



Flow cytometry analysis of Ramos cells (bottom histogram) using POU2AF1 antibody no. compared to a negative control cell (top histogram). FITC-conjugated goat-anti-rabbit secondary antibodies were used for the analysis.