

Product datasheet for **AP53395PU-N**

POTEE (Center) Rabbit Polyclonal Antibody

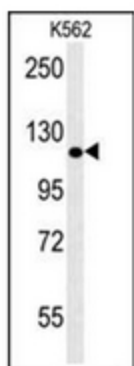
Product data:

| | |
|-----------------------|--|
| Product Type: | Primary Antibodies |
| Applications: | FC, WB |
| Recommended Dilution: | Peptide ELISA: 1/1000. Western Blot: 1/1000. Flow Cytometry: 1/10-1/50. |
| Reactivity: | Human |
| Host: | Rabbit |
| Isotype: | Ig |
| Clonality: | Polyclonal |
| Immunogen: | KLH conjugated synthetic peptide between 380-409 amino acids from the Central region of Human POTEE |
| Specificity: | This antibody recognizes Human POTEE (Center). |
| Formulation: | PBS containing 0.09% (W/V) Sodium Azide as preservative State: Aff - Purified State: Liquid purified Ig fraction |
| Concentration: | lot specific |
| Purification: | Protein A column, followed by peptide affinity purification |
| Conjugation: | Unconjugated |
| Storage: | Store undiluted at 2-8°C for one month or (in aliquots) at -20°C for longer. Avoid repeated freezing and thawing. |
| Stability: | Shelf life: one year from despatch. |
| Gene Name: | POTE ankyrin domain family member E |
| Database Link: | Entrez Gene 445582 Human Q6S8J3 |
| Synonyms: | A26C1A, POTE2 |
| Note: | Molecular Weight: 121363 Da |

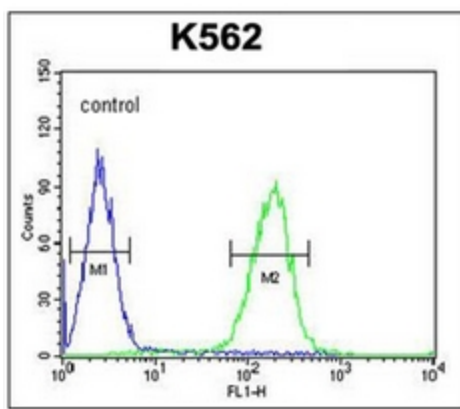


[View online »](#)

Product images:



Western blot analysis of POTEE Antibody (Center) in K562 cell line lysates (35ug/lane). This demonstrates the POTEE antibody detected the POTEE protein (arrow).



Flow cytometric analysis of K562 cells using POTEE Antibody (Center) (right histogram) compared to a negative control cell (left histogram). FITC-conjugated goat-anti-rabbit secondary antibodies were used for the analysis.