

Product datasheet for **AP53394PU-N**

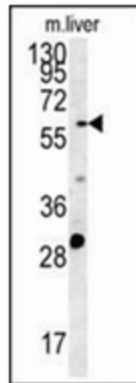
POTEB3 (C-term) Rabbit Polyclonal Antibody

Product data:

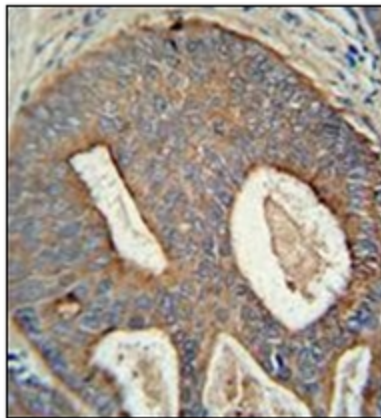
Product Type:	Primary Antibodies
Applications:	FC, IHC, WB
Recommended Dilution:	ELISA: 1/1000. Western Blot: 1/100-1/500. Flow Cytometry: 1/10-1/50. Immunohistochemistry on Paraffin Sections: 1/50-1/100.
Reactivity:	Human, Mouse
Host:	Rabbit
Isotype:	Ig
Clonality:	Polyclonal
Immunogen:	KLH conjugated synthetic peptide between 388-419 amino acids from the C-terminal region of human POTEB / A26B1
Specificity:	This antibody recognizes Human and Mouse POTEB / A26B1 (C-term).
Formulation:	PBS containing 0.09% (W/V) Sodium Azide as preservative State: Aff - Purified State: Liquid purified Ig fraction
Concentration:	lot specific
Purification:	Protein A column, followed by peptide affinity purification
Conjugation:	Unconjugated
Storage:	Store undiluted at 2-8°C for one month or (in aliquots) at -20°C for longer. Avoid repeated freezing and thawing.
Stability:	Shelf life: one year from despatch.
Gene Name:	POTE ankyrin domain family member B3
Database Link:	Entrez Gene 102724631 Human A0JP26
Synonyms:	POTE15
Note:	Molecular Weight: 65710 Da



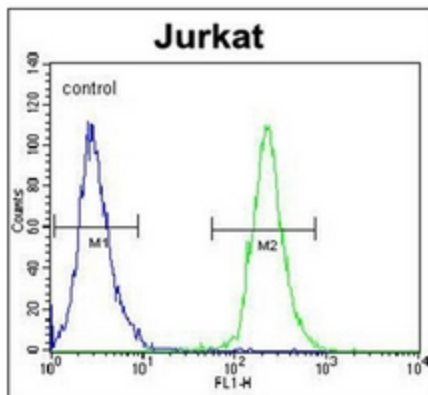
[View online »](#)

Product images:

Western blot analysis of POTEB Antibody (C-term) in mouse liver tissue lysates (15ug/lane). This demonstrates the POTEB antibody detected POTEB protein (arrow).



Immunohistochemistry analysis in formalin fixed and paraffin embedded human prostate carcinoma reacted with, which was peroxidase conjugated to the secondary antibody and DAB followed by staining. This data demonstrates the use of the POTEB antibody (C-term) for immunohistochemistry. Clinical relevance has not been evaluated.



Flow cytometric analysis of Jurkat cells using POTEB Antibody (C-term) (right histogram) compared to a negative control cell (left histogram). FITC-conjugated goat-anti-rabbit secondary antibodies were used for the analysis.