

Product datasheet for **AP53388PU-N**

POLR3GL (Center) Rabbit Polyclonal Antibody

Product data:

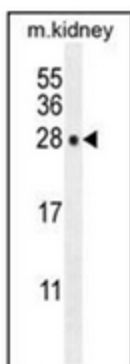
Product Type:	Primary Antibodies
Applications:	IHC, WB
Recommended Dilution:	ELISA: 1/1000. Western Blot: 1/100-1/500. Immunohistochemistry on Paraffin Sections: 1/50-1/100.
Reactivity:	Human, Mouse
Host:	Rabbit
Isotype:	Ig
Clonality:	Polyclonal
Immunogen:	KLH conjugated synthetic peptide between 72-101 amino acids from the Central region of human POLR3GL
Specificity:	This antibody recognizes Human and Mouse POLR3GL (Center).
Formulation:	PBS containing 0.09% (W/V) Sodium Azide as preservative State: Aff - Purified State: Liquid purified Ig fraction
Concentration:	lot specific
Purification:	Protein A column, followed by peptide affinity purification
Conjugation:	Unconjugated
Storage:	Store undiluted at 2-8°C for one month or (in aliquots) at -20°C for longer. Avoid repeated freezing and thawing.
Stability:	Shelf life: one year from despatch.
Gene Name:	polymerase (RNA) III subunit G like
Database Link:	Entrez Gene 84265 Human Q9BT43
Synonyms:	RNA polymerase III subunit C7-like, RPC32-like protein, RPC32HOM
Note:	Molecular Weight: 25334 Da



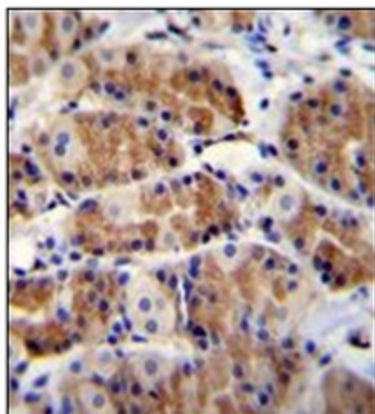
[View online »](#)

Protein Pathways: Cytosolic DNA-sensing pathway, Metabolic pathways, Purine metabolism, Pyrimidine metabolism, RNA polymerase

Product images:



Western blot analysis of POLR3GL Antibody (Center) in mouse kidney tissue lysates (35ug/lane). This demonstrates the POLR3GL antibody detected the POLR3GL protein (arrow).



Immunohistochemistry analysis in formalin fixed and paraffin embedded human stomach tissue reacted with POLR3GL Antibody (Center), which was peroxidase conjugated to the secondary antibody and followed by DAB staining. This data demonstrates the use of POLR3GL Antibody (Center) for immunohistochemistry. Clinical relevance has not been evaluated.