

## Product datasheet for **AP53385PU-N**

### **POLR2G (C-term) Rabbit Polyclonal Antibody**

#### **Product data:**

Product Type:	Primary Antibodies
Applications:	FC, WB
Recommended Dilution:	<b>ELISA:</b> 1/1000. <b>Western Blot:</b> 1/100-1/500. <b>Flow Cytometry:</b> 1/10-1/50.
Reactivity:	Human
Host:	Rabbit
Isotype:	Ig
Clonality:	Polyclonal
Immunogen:	KLH conjugated synthetic peptide between 145-153 amino acids from the C-terminal region of Human POLR2G
Specificity:	This antibody recognizes Human POLR2G (C-term).
Formulation:	PBS containing 0.09% (W/V) Sodium Azide as preservative State: Aff - Purified State: Liquid purified Ig fraction
Concentration:	lot specific
Purification:	Protein A column, followed by peptide affinity purification
Conjugation:	Unconjugated
Storage:	Store undiluted at 2-8°C for one month or (in aliquots) at -20°C for longer. Avoid repeated freezing and thawing.
Stability:	Shelf life: one year from despatch.
Gene Name:	polymerase (RNA) II subunit G
Database Link:	<a href="#">Entrez Gene 5436 Human P62487</a>
Background:	This gene encodes the seventh largest subunit of RNA polymerase II, the polymerase responsible for synthesizing messenger RNA in eukaryotes. The protein functions in transcription initiation, and is also thought to help stabilize transcribing polymerase molecules during elongation.



[View online »](#)

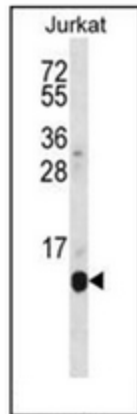
**Synonyms:** RNA polymerase II subunit B7, RPB7, RPB19

**Note:** **Molecular Weight:** 19294 Da

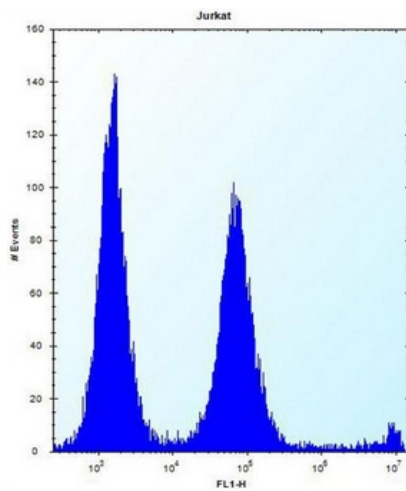
**Protein Families:** Transcription Factors

**Protein Pathways:** Huntington's disease, Metabolic pathways, Purine metabolism, Pyrimidine metabolism, RNA polymerase

**Product images:**



Western blot analysis of POLR2G Antibody (C-term) in Jurkat cell line lysates (35ug/lane). This demonstrates the POLR2G antibody detected the POLR2G protein (arrow).



Flow cytometric analysis of Jurkat cells using POLR2G Antibody (C-term) (right histogram) compared to a negative control cell (left histogram). FITC-conjugated donkey-anti-rabbit secondary antibodies were used for the analysis.