

Product datasheet for **AP53384PU-N**

RPB2 (POLR2B) (Center) Rabbit Polyclonal Antibody

Product data:

| | |
|-----------------------|---|
| Product Type: | Primary Antibodies |
| Applications: | WB |
| Recommended Dilution: | ELISA: 1/1000. Western Blot: 1/100-1/500. |
| Reactivity: | Human |
| Host: | Rabbit |
| Isotype: | Ig |
| Clonality: | Polyclonal |
| Immunogen: | KLH conjugated synthetic peptide between 796-826 amino acids from the Central region of human POLR2B |
| Specificity: | This antibody recognizes Human POLR2B (Center). |
| Formulation: | PBS containing 0.09% (W/V) Sodium Azide as preservative State: Aff - Purified State: Liquid purified Ig fraction |
| Concentration: | lot specific |
| Purification: | Protein A column, followed by peptide affinity purification |
| Conjugation: | Unconjugated |
| Storage: | Store undiluted at 2-8°C for one month or (in aliquots) at -20°C for longer. Avoid repeated freezing and thawing. |
| Stability: | Shelf life: one year from despatch. |
| Gene Name: | polymerase (RNA) II subunit B |
| Database Link: | Entrez Gene 5431 Human P30876 |
| Background: | This gene encodes the second largest subunit of RNA polymerase II, the polymerase responsible for synthesizing messenger RNA in eukaryotes. This subunit, in combination with at least two other polymerase subunits, forms a structure within the polymerase that maintains contact in the active site of the enzyme between the DNA template and the newly synthesized RNA. [provided by RefSeq]. |



[View online »](#)

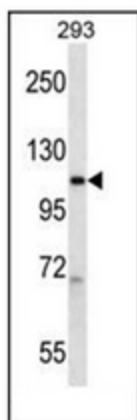
Synonyms: RPB140

Note: **Molecular Weight:** 133897 Da

Protein Families: Transcription Factors

Protein Pathways: Huntington's disease, Metabolic pathways, Purine metabolism, Pyrimidine metabolism, RNA polymerase

Product images:



Western blot analysis of POLR2B Antibody (Center) in 293 cell line lysates (35ug/lane). This demonstrates the POLR2B antibody detected the POLR2B protein (arrow).