

Product datasheet for **AP53381PU-N**

POLN (C-term) Rabbit Polyclonal Antibody

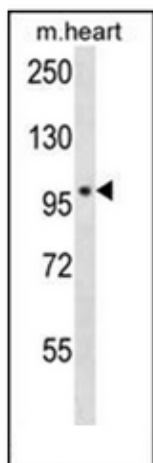
Product data:

Product Type:	Primary Antibodies
Applications:	WB
Recommended Dilution:	ELISA: 1/1000. Western Blot: 1/1000.
Reactivity:	Human, Mouse
Host:	Rabbit
Isotype:	Ig
Clonality:	Polyclonal
Immunogen:	KLH conjugated synthetic peptide between 651-679 amino acids from the C-terminal region of human DNA polymerase nu
Specificity:	This antibody recognizes Human and Mouse DNA polymerase nu (C-term).
Formulation:	PBS containing 0.09% (W/V) Sodium Azide as preservative State: Aff - Purified State: Liquid purified Ig fraction
Concentration:	lot specific
Purification:	Affinity Chromatography on Protein A
Conjugation:	Unconjugated
Storage:	Store undiluted at 2-8°C for one month or (in aliquots) at -20°C for longer. Avoid repeated freezing and thawing.
Stability:	Shelf life: one year from despatch.
Gene Name:	polymerase (DNA) nu
Database Link:	Entrez Gene 353497 Human Q7Z5Q5
Synonyms:	POLN, DNA polymerase N, POL4P
Note:	Molecular Weight: 100307 Da
Protein Families:	Druggable Genome



[View online »](#)

Product images:



Western blot analysis of POLN Antibody (C-term) in mouse heart tissue lysates (35ug/lane). This demonstrates the POLN antibody detected the POLN protein (arrow).