

## Product datasheet for **AP53380PU-N**

### DNA Polymerase lambda (POLL) (C-term) Rabbit Polyclonal Antibody

#### Product data:

Product Type:	Primary Antibodies
Applications:	WB
Recommended Dilution:	<b>ELISA:</b> 1/1000. <b>Western Blot:</b> 1/100-1/500.
Reactivity:	Human
Host:	Rabbit
Isotype:	Ig
Clonality:	Polyclonal
Immunogen:	KLH conjugated synthetic peptide between 546~575 amino acids from the C-terminal region of human DNA polymerase lambda.
Specificity:	This antibody recognizes Human DNA polymerase lambda (C-term).
Formulation:	PBS containing 0.09% (W/V) Sodium Azide as preservative State: Purified State: Liquid purified Ig fraction
Concentration:	lot specific
Purification:	Affinity Chromatography on Protein A
Conjugation:	Unconjugated
Storage:	Store undiluted at 2-8°C for one month or (in aliquots) at -20°C for longer. Avoid repeated freezing and thawing.
Stability:	Shelf life: one year from despatch.
Gene Name:	polymerase (DNA) lambda
Database Link:	<a href="#">Entrez Gene 27343 Human Q9UGP5</a>
Background:	This gene encodes a DNA polymerase. DNA polymerases catalyze DNA-template-directed extension of the 3'-end of a DNA strand. This particular polymerase, which is a member of the X family of DNA polymerases, likely plays a role in non-homologous end joining and other DNA repair processes.
Synonyms:	Pol Lambda, DNA polymerase kappa, DNA polymerase beta-2, POLL



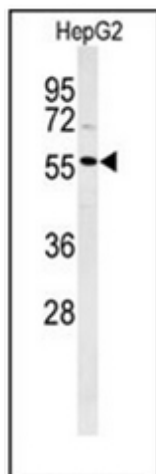
[View online »](#)

**Note:** **Molecular Weight:** 63482 Da

**Protein Families:** Druggable Genome

**Protein Pathways:** Base excision repair, Non-homologous end-joining

**Product images:**



Western blot analysis of POLL Antibody (C-term) in HepG2 cell line lysates (35ug/lane). POLL (arrow) was detected using the purified Pab.