

Product datasheet for **AP53374PU-N**

PODNL1 (Center) Rabbit Polyclonal Antibody

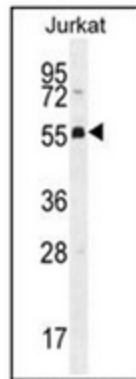
Product data:

Product Type:	Primary Antibodies
Applications:	FC, IHC, WB
Recommended Dilution:	ELISA: 1/1000. Western Blot: 1/100-1/500. Flow Cytometry: 1/10-1/50. Immunohistochemistry on Paraffin Sections: 1/10-1/50.
Reactivity:	Human
Host:	Rabbit
Isotype:	Ig
Clonality:	Polyclonal
Immunogen:	KLH conjugated synthetic peptide between 166-195 amino acids from the Central region of human PODNL1
Specificity:	This antibody recognizes Human PODNL1 (Center).
Formulation:	PBS containing 0.09% (W/V) Sodium Azide as preservative State: Aff - Purified State: Liquid purified Ig fraction
Concentration:	lot specific
Purification:	Protein A column, followed by peptide affinity purification
Conjugation:	Unconjugated
Storage:	Store undiluted at 2-8°C for one month or (in aliquots) at -20°C for longer. Avoid repeated freezing and thawing.
Stability:	Shelf life: one year from despatch.
Gene Name:	podocan-like 1
Database Link:	Entrez Gene 79883 Human Q6PEZ8
Synonyms:	Podocan-like protein 1,SLRR5B
Note:	Molecular Weight: 56539 Da

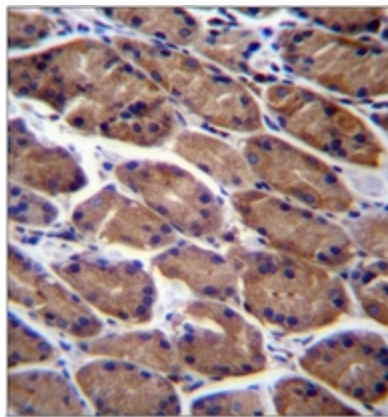


[View online »](#)

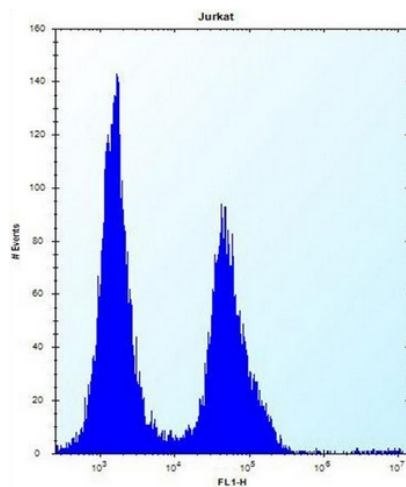
Product images:



Western blot analysis of PODNL1 Antibody (Center) in Jurkat cell line lysates (35ug/lane). This demonstrates the PODNL1 antibody detected the PODNL1 protein (arrow).



Immunohistochemistry analysis in formalin fixed and paraffin embedded human stomach tissue reacted with PODNL1 Antibody (Center), which was peroxidase conjugated to the secondary antibody and followed by DAB staining. This data demonstrates the use of PODNL1 Antibody (Center) for immunohistochemistry. Clinical relevance has not been evaluated.



Flow cytometric analysis of Jurkat cells using PODNL1 Antibody (Center) (right histogram) compared to a negative control cell (left histogram). FITC-conjugated donkey-anti-rabbit secondary antibodies were used for the analysis.