

Product datasheet for **AP53371PU-N**

NTE (PNPLA6) (C-term) Rabbit Polyclonal Antibody

Product data:

Product Type:	Primary Antibodies
Applications:	WB
Recommended Dilution:	ELISA: 1/1000. Western Blot: 1/100-1/500.
Reactivity:	Human
Host:	Rabbit
Isotype:	Ig
Clonality:	Polyclonal
Immunogen:	KLH conjugated synthetic peptide between 960-990 amino acids from the C-terminal region of human NTE
Specificity:	This antibody recognizes Human NTE (C-term).
Formulation:	PBS containing 0.09% (W/V) Sodium Azide as preservative State: Aff - Purified State: Liquid purified Ig fraction
Concentration:	lot specific
Purification:	Protein A column, followed by peptide affinity purification
Conjugation:	Unconjugated
Storage:	Store undiluted at 2-8°C for one month or (in aliquots) at -20°C for longer. Avoid repeated freezing and thawing.
Stability:	Shelf life: one year from despatch.
Gene Name:	patatin like phospholipase domain containing 6
Database Link:	Entrez Gene 10908 Human Q8IY17



[View online »](#)

Background:

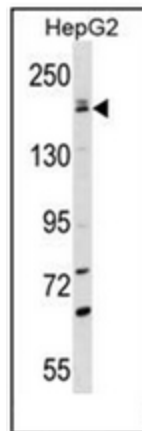
PNPLA6 is a phospholipase that deacetylates intracellular phosphatidylcholine to produce glycerophosphocholine. It is thought to function in neurite outgrowth and process elongation during neuronal differentiation. The protein is anchored to the cytoplasmic face of the endoplasmic reticulum in both neurons and non-neuronal cells. Mutations in this gene result in autosomal recessive spastic paraplegia, and the protein is the target for neurodegeneration induced by organophosphorus compounds and chemical warfare agents. Multiple transcript variants encoding different isoforms have been found for this gene. [provided by RefSeq].

Synonyms:

PNPLA6

Note:**Molecular Weight:** 149995 Da**Protein Families:**

Transmembrane

Product images:

Western blot analysis of NTE Antibody (C-term) in HepG2 cell line lysates (35ug/lane). This demonstrates the NTE antibody detected the PNPLA6 protein (arrow).