

Product datasheet for **AP53370PU-N**

PNPLA3 (109-137) Rabbit Polyclonal Antibody

Product data:

Product Type:	Primary Antibodies
Applications:	WB
Recommended Dilution:	Western blot: 1/1000.
Reactivity:	Human
Host:	Rabbit
Isotype:	Ig
Clonality:	Polyclonal
Immunogen:	KLH conjugated synthetic peptide between 109-137 amino acids from the N-terminal region of Human PNPLA3
Specificity:	This antibody recognizes Human PNPLA3 (N-term). Other species not tested.
Formulation:	PBS State: Aff - Purified State: Liquid purified Ig fraction Preservative: 0.09% Sodium Azide
Concentration:	lot specific
Purification:	Protein A Chromatography followed by peptide affinity purification
Conjugation:	Unconjugated
Storage:	Store undiluted at 2-8°C for one month or (in aliquots) at -20°C for longer. Avoid repeated freezing and thawing.
Stability:	Shelf life: one year from despatch.
Gene Name:	patatin like phospholipase domain containing 3
Database Link:	Entrez Gene 80339 Human Q9NST1
Background:	The protein encoded by this gene is a triacylglycerol lipase that mediates triacylglycerol hydrolysis in adipocytes. The encoded protein, which appears to be membrane bound, may be involved in the balance of energy usage/storage in adipocytes.
Synonyms:	Adiponutrin, C22orf20, iPLA2 epsilon

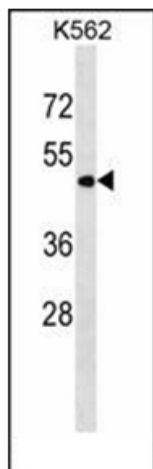


[View online »](#)

Note: **Molecular Weight:** 52865 Da

Protein Pathways: Glycerolipid metabolism, Glycerophospholipid metabolism, Limonene and pinene degradation, Metabolic pathways, Phenylalanine metabolism, Tyrosine metabolism

Product images:



Western blot analysis in K562 cell line lysates (35ug/lane) using PNPLA3 Antibody (N-term). This demonstrates the PNPLA3 antibody detected the PNPLA3 protein (arrow).