

Product datasheet for **AP53366PU-N**

Pancreatic Lipase (PNLIP) (C-term) Rabbit Polyclonal Antibody

Product data:

Product Type:	Primary Antibodies
Applications:	WB
Recommended Dilution:	ELISA: 1/1000. Western Blot: 1/100-1/500.
Reactivity:	Human
Host:	Rabbit
Isotype:	Ig
Clonality:	Polyclonal
Immunogen:	KLH conjugated synthetic peptide between 311-341 amino acids from the C-terminal region of human Pancreatic lipase / PNLIP
Specificity:	This antibody recognizes Human Pancreatic lipase / PNLIP (C-term).
Formulation:	PBS containing 0.09% (W/V) Sodium Azide as preservative State: Aff - Purified State: Liquid purified Ig fraction
Concentration:	lot specific
Purification:	Protein A column, followed by peptide affinity purification
Conjugation:	Unconjugated
Storage:	Store undiluted at 2-8°C for one month or (in aliquots) at -20°C for longer. Avoid repeated freezing and thawing.
Stability:	Shelf life: one year from despatch.
Gene Name:	pancreatic lipase
Database Link:	Entrez Gene 5406 Human P16233
Background:	This gene is a member of the lipase gene family. It encodes a carboxyl esterase that hydrolyzes insoluble, emulsified triglycerides, and is essential for the efficient digestion of dietary fats. This gene is expressed specifically in the pancreas.
Synonyms:	Pancreatic triacylglycerol lipase, PTL



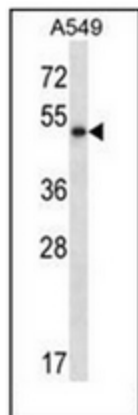
[View online »](#)

Note: **Molecular Weight:** 51157 Da

Protein Families: Druggable Genome, Secreted Protein

Protein Pathways: Glycerolipid metabolism, Metabolic pathways

Product images:



Western blot analysis of Pancreatic lipase / PNLIP Antibody (C-term) in A549 cell line lysates (35ug/lane). This demonstrates the PNLIP antibody detected the PNLIP protein (arrow).