

Product datasheet for **AP53365PU-N**

PNLDC1 (C-term) Rabbit Polyclonal Antibody

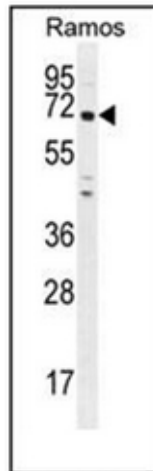
Product data:

Product Type:	Primary Antibodies
Applications:	FC, IHC, WB
Recommended Dilution:	Peptide ELISA: 1/1000. Western Blot: 1/1000. Flow Cytometry: 1/10-1/50. Immunohistochemistry on Paraffin Sections: 1/10-1/50.
Reactivity:	Human
Host:	Rabbit
Isotype:	Ig
Clonality:	Polyclonal
Immunogen:	KLH conjugated synthetic peptide between 449-478 amino acids from the C-terminal region of Human PNLDC1
Specificity:	This antibody recognizes Human PNLDC1 (C-term).
Formulation:	PBS State: Aff - Purified State: Liquid purified Ig fraction Preservative: 0.09% Sodium Azide
Concentration:	lot specific
Purification:	Affinity Chromatography on Protein A
Conjugation:	Unconjugated
Storage:	Store undiluted at 2-8°C for one month or (in aliquots) at -20°C for longer. Avoid repeated freezing and thawing.
Stability:	Shelf life: one year from despatch.
Gene Name:	PARN like, ribonuclease domain containing 1
Database Link:	Entrez Gene 154197 Human Q8NA58
Synonyms:	dj195P10.2; FLJ40240; MGC138451
Note:	Molecular Weight: 60124 Da

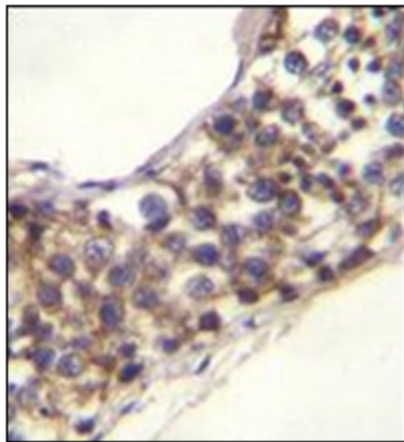


[View online »](#)

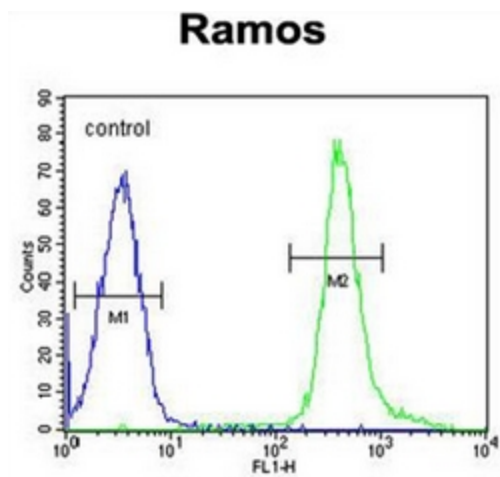
Product images:



Western blot analysis of PNLDC1 Antibody (C-term) in Ramos cell line lysates (35ug/lane). This demonstrates the PNLDC1 antibody detected the PNLDC1 protein (arrow).



Formalin fixed, paraffin embedded human testis tissue stained with PNLDC1 Antibody (C-term) followed by peroxidase conjugation of the secondary antibody and DAB staining. This data demonstrates the use of PNLDC1 Antibody (C-term) for Immunohistochemistry. Clinical relevance has not been evaluated.



Flow cytometric analysis of Ramos cells using PNLDC1 Antibody (C-term) (right histogram) compared to a Negative Control cell (left histogram). FITC-conjugated Goat-anti-Rabbit secondary antibodies were used for the analysis.