

Product datasheet for **AP53363PU-N**

PMS1 (C-term) Rabbit Polyclonal Antibody

Product data:

Product Type:	Primary Antibodies
Applications:	WB
Recommended Dilution:	ELISA: 1/1000. Western Blot: 1/100-1/500.
Reactivity:	Human
Host:	Rabbit
Isotype:	Ig
Clonality:	Polyclonal
Immunogen:	KLH conjugated synthetic peptide between 693-722 amino acids from the C-terminal region of human PMS1
Specificity:	This antibody recognizes Human PMS1 (C-term).
Formulation:	PBS containing 0.09% (W/V) Sodium Azide as preservative State: Aff - Purified State: Liquid purified Ig fraction
Concentration:	lot specific
Purification:	Protein A column, followed by peptide affinity purification
Conjugation:	Unconjugated
Storage:	Store undiluted at 2-8°C for one month or (in aliquots) at -20°C for longer. Avoid repeated freezing and thawing.
Stability:	Shelf life: one year from despatch.
Gene Name:	PMS1 homolog 1, mismatch repair system component
Database Link:	Entrez Gene 5378 Human P54277



[View online »](#)

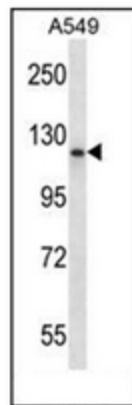
Background: This gene encodes a protein belonging to the DNA mismatch repair mutL/hexB family. This protein is thought to be involved in the repair of DNA mismatches, and it can form heterodimers with MLH1, a known DNA mismatch repair protein. Mutations in this gene cause hereditary nonpolyposis colorectal cancer type 3 (HNPCC3) either alone or in combination with mutations in other genes involved in the HNPCC phenotype, which is also known as Lynch syndrome.

Synonyms: PMSL1

Note: **Molecular Weight:** 105830 Da

Protein Families: Druggable Genome, Transcription Factors

Product images:



Western blot analysis of PMS1 Antibody (C-term) in A549 cell line lysates (35ug/lane). This demonstrates the PMS1 antibody detected the PMS1 protein (arrow).