

Product datasheet for **AP53362PU-N**

PMPCA (C-term) Rabbit Polyclonal Antibody

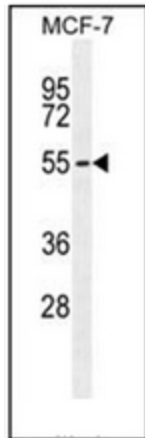
Product data:

Product Type:	Primary Antibodies
Applications:	FC, WB
Recommended Dilution:	ELISA: 1/1000. Western Blot: 1/100-1/500. Flow Cytometry: 1/10-1/50.
Reactivity:	Human
Host:	Rabbit
Isotype:	Ig
Clonality:	Polyclonal
Immunogen:	KLH conjugated synthetic peptide between 461-490 amino acids from the C-terminal region of human PMPCA
Specificity:	This antibody recognizes Human PMPCA (C-term).
Formulation:	PBS containing 0.09% (W/V) Sodium Azide as preservative State: Aff - Purified State: Liquid purified Ig fraction
Concentration:	lot specific
Purification:	Protein A column, followed by peptide affinity purification
Conjugation:	Unconjugated
Storage:	Store undiluted at 2-8°C for one month or (in aliquots) at -20°C for longer. Avoid repeated freezing and thawing.
Stability:	Shelf life: one year from despatch.
Gene Name:	peptidase, mitochondrial processing alpha subunit
Database Link:	Entrez Gene 23203 Human Q10713
Synonyms:	INPP5E, KIAA0123, MPPA, Alpha-MPP, P-55
Note:	Molecular Weight: 58253 Da
Protein Families:	Druggable Genome, Protease

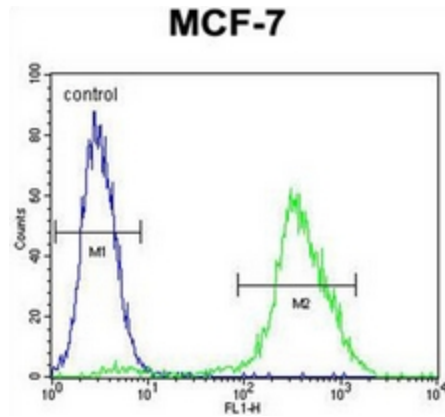


[View online »](#)

Product images:



Western blot analysis of PMPCA Antibody (C-term) in MCF-7 cell line lysates (35ug/lane). This demonstrates the PMPCA antibody detected the PMPCA protein (arrow).



Flow cytometric analysis of MCF-7 cells using PMPCA Antibody (C-term) (right histogram) compared to a negative control cell (left histogram). FITC-conjugated goat-anti-rabbit secondary antibodies were used for the analysis.