

## Product datasheet for **AP53361PU-N**

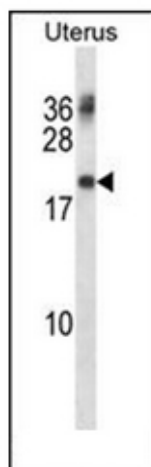
### PMP22 Rabbit Polyclonal Antibody

#### Product data:

Product Type:	Primary Antibodies
Applications:	WB
Recommended Dilution:	<b>Western Blot:</b> 1/500 - 1/1000.
Reactivity:	Human
Host:	Rabbit
Isotype:	Ig
Clonality:	Polyclonal
Immunogen:	KLH conjugated synthetic peptide selected from 102-130 Human PMP22.
Specificity:	This antibody recognizes Human PMP22
Formulation:	PBS containing 0.09% (W/V) Sodium Azide as preservative State: Aff - Purified State: Liquid purified Ig fraction
Concentration:	lot specific
Purification:	Protein A column, followed by peptide affinity purification
Conjugation:	Unconjugated
Storage:	Store undiluted at 2-8°C for one month or (in aliquots) at -20°C for longer. Avoid repeated freezing and thawing.
Stability:	Shelf life: one year from despatch.
Gene Name:	peripheral myelin protein 22
Database Link:	<a href="#">Entrez Gene 5376 Human Q01453</a>
Background:	This gene encodes an integral membrane protein that is a major component of myelin in the peripheral nervous system. Various mutations of this gene are causes of Charcot-Marie-Tooth disease Type IA, Dejerine-Sottas syndrome, and hereditary neuropathy with liability to pressure palsies.
Synonyms:	PMP-22, GAS3, GAS-3, Peripheral myelin protein 22
Note:	<b>Molecular Weight:</b> 17891 Da



[View online »](#)

**Product images:**

Western blot analysis of PMP22 Antibody in Human normal Uterus cell line lysates (35ug/lane). This demonstrates the PMP22 antibody detected the PMP22 protein (arrow).