

Product datasheet for **AP53357PU-N**

PLVAP (Center) Rabbit Polyclonal Antibody

Product data:

Product Type:	Primary Antibodies
Applications:	FC, WB
Recommended Dilution:	ELISA: 1/1000. Western Blot: 1/100-1/500. Flow Cytometry: 1/10-1/50.
Reactivity:	Human
Host:	Rabbit
Isotype:	Ig
Clonality:	Polyclonal
Immunogen:	KLH conjugated synthetic peptide between 221~250 amino acids from the Center region of human PLVAP
Specificity:	This antibody recognizes Human PLVAP (Center).
Formulation:	PBS containing 0.09% (W/V) Sodium Azide as preservative State: Aff - Purified State: Liquid purified Ig fraction
Concentration:	lot specific
Purification:	Protein A column, followed by peptide affinity purification
Conjugation:	Unconjugated
Storage:	Store undiluted at 2-8°C for one month or (in aliquots) at -20°C for longer. Avoid repeated freezing and thawing.
Stability:	Shelf life: one year from despatch.
Gene Name:	plasmalemma vesicle associated protein
Database Link:	Entrez Gene 83483 Human Q9BX97
Background:	PLVAP involved in the formation of stomatal and fenestral diaphragms of caveolae. This protein may function in microvascular permeability.
Synonyms:	Plasmalemma vesicle protein 1, PV1, PV-1, MECA-32 antigen, FELS, Endothelial cell marker, Endothelial cell surface marker, Endothelial Cell Antigen

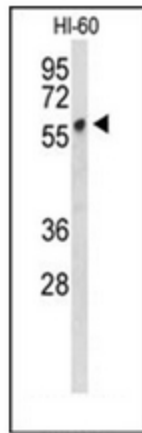


[View online »](#)

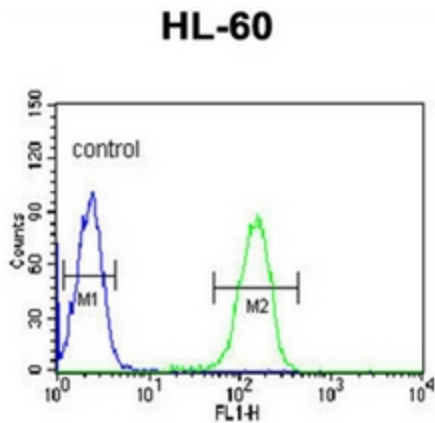
Note: **Molecular Weight:** 50594 Da

Protein Families: Transmembrane

Product images:



Western blot analysis of PLVAP in HL-60 cells.



Flow cytometric analysis of HL-60 cells using PLVAP Antibody (Center) (right histogram) compared to a negative control cell (left histogram). FITC-conjugated goat-anti-rabbit secondary antibodies were used for the analysis.