

Product datasheet for **AP53356PU-N**

PLRG1 (N-term) Rabbit Polyclonal Antibody

Product data:

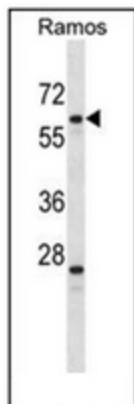
Product Type:	Primary Antibodies
Applications:	WB
Recommended Dilution:	ELISA: 1/1000. Western Blot: 1/100-1/500.
Reactivity:	Human
Host:	Rabbit
Isotype:	Ig
Clonality:	Polyclonal
Immunogen:	KLH conjugated synthetic peptide between 16-45 amino acids from the N-terminal region of Human PLRG1
Specificity:	This antibody recognizes Human PLRG1 (N-term).
Formulation:	PBS containing 0.09% (W/V) Sodium Azide as preservative State: Aff - Purified State: Liquid purified Ig fraction
Concentration:	lot specific
Purification:	Protein A column, followed by peptide affinity purification
Conjugation:	Unconjugated
Storage:	Store undiluted at 2-8°C for one month or (in aliquots) at -20°C for longer. Avoid repeated freezing and thawing.
Stability:	Shelf life: one year from despatch.
Gene Name:	pleiotropic regulator 1
Database Link:	Entrez Gene 5356 Human O43660
Background:	PLRG1 is necessary for spliceosome assembly and for pre-mRNA splicing.
Synonyms:	Pleiotropic regulator 1
Note:	Molecular Weight: 57194 Da
Protein Families:	Transcription Factors



[View online »](#)

Protein Pathways: Spliceosome

Product images:



Western blot analysis of PLRG1 Antibody (N-term) in Ramos cell line lysates (35ug/lane). This demonstrates the PLRG1 antibody detected the PLRG1 protein (arrow).