

## Product datasheet for **AP53354PU-N**

### **PLOD1 (N-term) Rabbit Polyclonal Antibody**

#### **Product data:**

Product Type:	Primary Antibodies
Applications:	FC, IHC, WB
Recommended Dilution:	<b>ELISA:</b> 1/1000. <b>Western Blot:</b> 1/100-1/500. <b>Flow Cytometry:</b> 1/10-1/50. <b>Immunohistochemistry on Paraffin Sections:</b> 1/10-1/50.
Reactivity:	Human
Host:	Rabbit
Isotype:	Ig
Clonality:	Polyclonal
Immunogen:	KLH conjugated synthetic peptide between 73-102 amino acids from the N-terminal region of human PLOD1 / PLOD
Specificity:	This antibody recognizes Human PLOD1 / PLOD (N-term).
Formulation:	PBS containing 0.09% (W/V) Sodium Azide as preservative State: Aff - Purified State: Liquid purified Ig fraction
Concentration:	lot specific
Purification:	Protein A column, followed by peptide affinity purification
Conjugation:	Unconjugated
Storage:	Store undiluted at 2-8°C for one month or (in aliquots) at -20°C for longer. Avoid repeated freezing and thawing.
Stability:	Shelf life: one year from despatch.
Gene Name:	procollagen-lysine,2-oxoglutarate 5-dioxygenase 1
Database Link:	<a href="#">Entrez Gene 5351 Human Q02809</a>



[View online »](#)

**Background:** Lysyl hydroxylase is a membrane-bound homodimeric protein localized to the cisternae of the endoplasmic reticulum. The enzyme (cofactors iron and ascorbate) catalyzes the hydroxylation of lysyl residues in collagen-like peptides. The resultant hydroxylysyl groups are attachment sites for carbohydrates in collagen and thus are critical for the stability of intermolecular crosslinks. Some patients with Ehlers-Danlos syndrome type VI have deficiencies in lysyl hydroxylase activity.

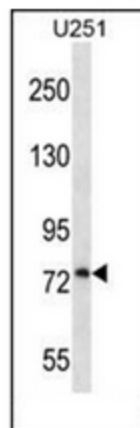
**Synonyms:** Lysyl hydroxylase 1, LLH

**Note:** **Molecular Weight:** 83550 Da

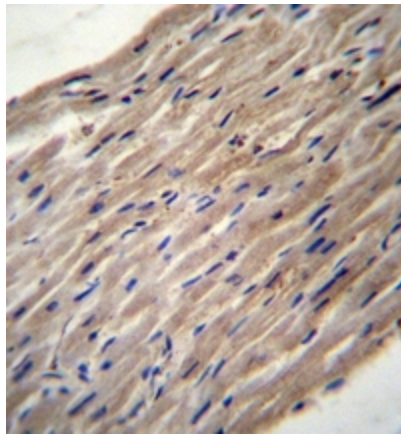
**Protein Families:** Druggable Genome

**Protein Pathways:** Lysine degradation

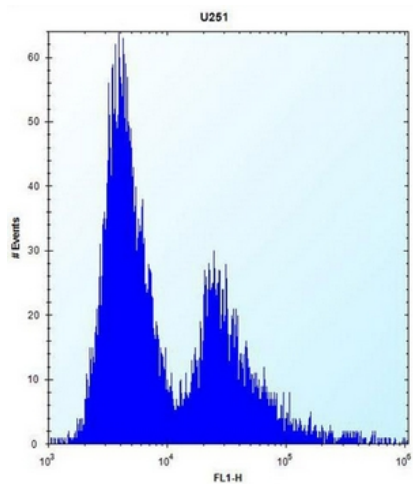
### Product images:



Western blot analysis of PLOD1 / PLOD Antibody (N-term) in U251 cell line lysates (35ug/lane). This demonstrates the PLOD1 antibody detected the PLOD1 protein (arrow).



Immunohistochemistry analysis in formalin fixed and paraffin embedded human heart tissue reacted with PLOD1 / PLOD Antibody (N-term), which was peroxidase conjugated to the secondary antibody and followed by DAB staining. This data demonstrates the use of PLOD1 Antibody (N-term) for immunohistochemistry. Clinical relevance has not been evaluated.



Flow cytometric analysis of U251 cells using PLOD1 / PLOD Antibody (N-term) (right histogram) compared to a negative control cell (left histogram). FITC-conjugated goat-anti-rabbit secondary antibodies were used for the analysis