

## Product datasheet for **AP53353PU-N**

### **PLEKHO2 (N-term) Rabbit Polyclonal Antibody**

#### **Product data:**

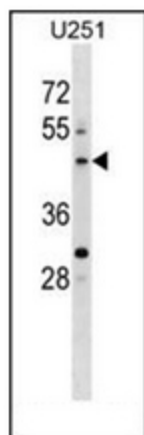
Product Type:	Primary Antibodies
Applications:	WB
Recommended Dilution:	<b>ELISA:</b> 1/1000. <b>Western Blot:</b> 1/100-1/500.
Reactivity:	Human
Host:	Rabbit
Isotype:	Ig
Clonality:	Polyclonal
Immunogen:	KLH conjugated synthetic peptide between 101-130 amino acids from the N-terminal region of human PLEKHO2
Specificity:	This antibody recognizes Human PLEKHO2 (N-term).
Formulation:	PBS containing 0.09% (W/V) Sodium Azide as preservative State: Aff - Purified State: Liquid purified Ig fraction
Concentration:	lot specific
Purification:	Protein A column, followed by peptide affinity purification
Conjugation:	Unconjugated
Storage:	Store undiluted at 2-8°C for one month or (in aliquots) at -20°C for longer. Avoid repeated freezing and thawing.
Stability:	Shelf life: one year from despatch.
Gene Name:	pleckstrin homology domain containing O2
Database Link:	<a href="#">Entrez Gene 80301 Human Q8TD55</a>
Background:	PLEKHO2 contains one PH domain. There are two named isoforms.
Synonyms:	PLEKHQ1, PP9099
Note:	<b>Molecular Weight:</b> 53350 Da
Protein Families:	Druggable Genome



[View online »](#)

Protein Pathways: Cytokine-cytokine receptor interaction

### Product images:



Western blot analysis of PLEKHO2 Antibody (N-term) in U251 cell line lysates (35ug/lane). This demonstrates the PLEKHO2 antibody detected the PLEKHO2 protein (arrow).