

Product datasheet for **AP53352PU-N**

PLEKHM1 (N-term) Rabbit Polyclonal Antibody

Product data:

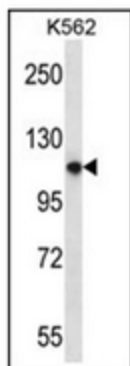
Product Type:	Primary Antibodies
Applications:	WB
Recommended Dilution:	ELISA: 1/1000. Western Blot: 1/100-1/500.
Reactivity:	Human
Host:	Rabbit
Isotype:	Ig
Clonality:	Polyclonal
Immunogen:	KLH conjugated synthetic peptide between 49-78 amino acids from the N-terminal region of human PLEKHM1
Specificity:	This antibody recognizes Human PLEKHM1 (N-term).
Formulation:	PBS containing 0.09% (W/V) Sodium Azide as preservative State: Aff - Purified State: Liquid purified Ig fraction
Concentration:	lot specific
Purification:	PBS containing 0.09% (W/V) Sodium Azide as preservative
Conjugation:	Unconjugated
Storage:	Store undiluted at 2-8°C for one month or (in aliquots) at -20°C for longer. Avoid repeated freezing and thawing.
Stability:	Shelf life: one year from despatch.
Gene Name:	pleckstrin homology and RUN domain containing M1
Database Link:	Entrez Gene 9842 Human Q9Y4G2
Background:	The protein encoded by this gene is essential for bone resorption, and may play a critical role in vesicular transport in the osteoclast. Mutations in this gene are associated with autosomal recessive osteopetrosis type 6 (OPTB6). Alternatively spliced transcript variants have been found for this gene.
Synonyms:	KIAA0356



[View online »](#)

Note: **Molecular Weight:** 117443 Da

Product images:



Western blot analysis of PLEKHM1 Antibody (N-term) in K562 cell line lysates (35ug/lane). This demonstrates the PLEKHM1 antibody detected the PLEKHM1 protein (arrow).