

Product datasheet for **AP53351PU-N**

PLEKHH1 (C-term) Rabbit Polyclonal Antibody

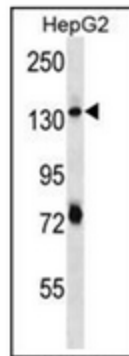
Product data:

Product Type:	Primary Antibodies
Applications:	FC, IHC, WB
Recommended Dilution:	ELISA: 1/1000. Western Blot: 1/100-1/500. Flow Cytometry: 1/10-1/50. Immunohistochemistry on Paraffin Sections: 1/10-1/50.
Reactivity:	Human
Host:	Rabbit
Isotype:	Ig
Clonality:	Polyclonal
Immunogen:	KLH conjugated synthetic peptide between 1089-1118 amino acids from the C-terminal region of human PLEKHH1
Specificity:	This antibody recognizes Human PLEKHH1 (C-term).
Formulation:	PBS containing 0.09% (W/V) Sodium Azide as preservative State: Aff - Purified State: Liquid purified Ig fraction
Concentration:	lot specific
Purification:	Protein A column, followed by peptide affinity purification
Conjugation:	Unconjugated
Storage:	Store undiluted at 2-8°C for one month or (in aliquots) at -20°C for longer. Avoid repeated freezing and thawing.
Stability:	Shelf life: one year from despatch.
Gene Name:	pleckstrin homology, MyTH4 and FERM domain containing H1
Database Link:	Entrez Gene 57475 Human Q9ULM0
Synonyms:	Pleckstrin homology domain-containing family H member 1, KIAA1200
Note:	Molecular Weight: 151232 Da

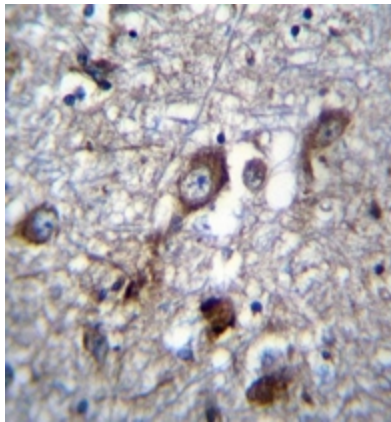


[View online »](#)

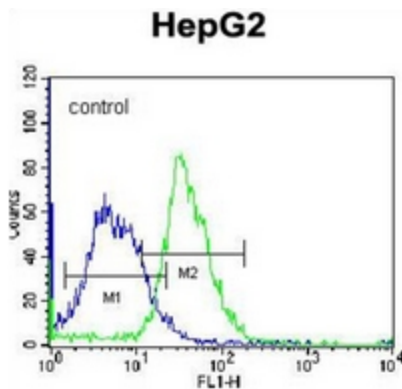
Product images:



Western blot analysis of PLEKHH1 Antibody (C-term) in HepG2 cell line lysates (35ug/lane). This demonstrates the PLEKHH1 antibody detected the PLEKHH1 protein (arrow).



Immunohistochemistry analysis in formalin fixed and paraffin embedded human brain tissue reacted with PLEKHH1 Antibody (C-term), which was peroxidase conjugated to the secondary antibody and followed by DAB staining. This data demonstrates the use of PLEKHH1 Antibody (C-term) for immunohistochemistry. Clinical relevance has not been evaluated.



Flow cytometric analysis of K562 cells using PLEKHH1 Antibody (C-term) (right histogram) compared to a negative control cell (left histogram). FITC-conjugated donkey-anti-rabbit secondary antibodies were used for the analysis.