

Product datasheet for **AP53349PU-N**

PLEKHF2 (Center) Rabbit Polyclonal Antibody

Product data:

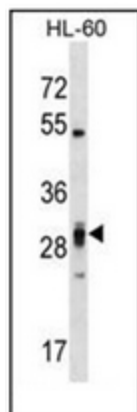
Product Type:	Primary Antibodies
Applications:	WB
Recommended Dilution:	ELISA: 1/1000. Western Blot: 1/100-1/500.
Reactivity:	Human
Host:	Rabbit
Isotype:	Ig
Clonality:	Polyclonal
Immunogen:	KLH conjugated synthetic peptide between 70-98 amino acids from the Central region of human PLEKHF2
Specificity:	This antibody recognizes Human PLEKHF2 (Center).
Formulation:	PBS containing 0.09% (W/V) Sodium Azide as preservative State: Aff - Purified State: Liquid purified Ig fraction
Concentration:	lot specific
Purification:	Protein A column, followed by peptide affinity purification
Conjugation:	Unconjugated
Storage:	Store undiluted at 2-8°C for one month or (in aliquots) at -20°C for longer. Avoid repeated freezing and thawing.
Stability:	Shelf life: one year from despatch.
Gene Name:	pleckstrin homology and FYVE domain containing 2
Database Link:	Entrez Gene 79666 Human Q9H8W4
Background:	PLEKHF2 (Phafin 2) is a PH and FYVE domain containing protein 2. The FYVE domain and Zinc binding domain targets proteins to membrane lipids via interaction with phosphatidylinositol 3 phosphate, PI3P. The FYVE domain and Zinc binding domain present in Fab1, YOTB, Vac1, and EEA1.
Synonyms:	Phafin 2, Phafin-2, ZFYVE18



[View online »](#)

Note: **Molecular Weight:** 27798 Da

Product images:



Western blot analysis of PLEKHF2 Antibody (Center) in HL-60 cell line lysates (35ug/lane). This demonstrates the PLEKHF2 antibody detected the PLEKHF2 protein (arrow).