

Product datasheet for **AP53348PU-N**

APPD (PLEKHF1) (N-term) Rabbit Polyclonal Antibody

Product data:

Product Type:	Primary Antibodies
Applications:	WB
Recommended Dilution:	ELISA: 1/1000. Western Blot: 1/100-1/500.
Reactivity:	Human
Host:	Rabbit
Isotype:	Ig
Clonality:	Polyclonal
Immunogen:	KLH conjugated synthetic peptide between 50-79 amino acids from the N-terminal region of human PLEKHF1
Specificity:	This antibody recognizes Human PLEKHF1 (N-term).
Formulation:	PBS containing 0.09% (W/V) Sodium Azide as preservative State: Aff - Purified State: Liquid purified Ig fraction
Concentration:	lot specific
Purification:	Protein A column, followed by peptide affinity purification
Conjugation:	Unconjugated
Storage:	Store undiluted at 2-8°C for one month or (in aliquots) at -20°C for longer. Avoid repeated freezing and thawing.
Stability:	Shelf life: one year from despatch.
Gene Name:	pleckstrin homology and FYVE domain containing 1
Database Link:	Entrez Gene 79156 Human Q96S99
Background:	PLEKHF1 may induce apoptosis through the lysosomal-mitochondrial pathway. Translocates to the lysosome initiating the permeabilization of lysosomal membrane (LMP) and resulting in the release of CTSD and CTSL to the cytoplasm. Triggers the caspase-independent apoptosis by altering mitochondrial membrane permeabilization (MMP) resulting in the release of PDCD8.

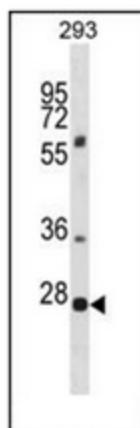


[View online »](#)

Synonyms: Phafin-1, Phafin 1, APPD, LAPF, ZFYVE15, Apoptosis-inducing protein

Note: **Molecular Weight:** 31195 Da

Product images:



Western blot analysis of PLEKHF1 Antibody (N-term) in 293 cell line lysates (35ug/lane). This demonstrates the PLEKHF1 antibody detected the PLEKHF1 protein (arrow).