

Product datasheet for **AP53346PU-N**

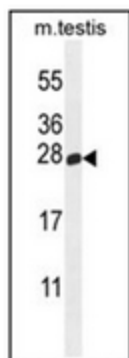
PLD6 (Center) Rabbit Polyclonal Antibody

Product data:

Product Type:	Primary Antibodies
Applications:	WB
Recommended Dilution:	ELISA: 1/1000. Western Blot: 1/100-1/500.
Reactivity:	Human, Mouse
Host:	Rabbit
Isotype:	Ig
Clonality:	Polyclonal
Immunogen:	KLH conjugated synthetic peptide between 132-162 amino acids from the Central region of human PLD6
Specificity:	This antibody recognizes Human and Mouse PLD2 (Center).
Formulation:	PBS containing 0.09% (W/V) Sodium Azide as preservative State: Aff - Purified State: Liquid purified Ig fraction
Concentration:	lot specific
Purification:	Protein A column, followed by peptide affinity purification
Conjugation:	Unconjugated
Storage:	Store undiluted at 2-8°C for one month or (in aliquots) at -20°C for longer. Avoid repeated freezing and thawing.
Stability:	Shelf life: one year from despatch.
Gene Name:	phospholipase D family member 6
Database Link:	Entrez Gene 201164 Human Q8N2A8
Synonyms:	Phospholipase D6, PLD 6, Choline phosphatase 6
Note:	Molecular Weight: 28273 Da
Protein Families:	Transmembrane



[View online »](#)

Product images:

Western blot analysis of PLD6 Antibody (Center) in mouse testis tissue lysates (35ug/lane). This demonstrates the PLD6 antibody detected the PLD6 protein (arrow).