

Product datasheet for **AP53340PU-N**

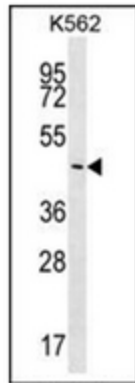
PLCXD2 (Center) Rabbit Polyclonal Antibody

Product data:

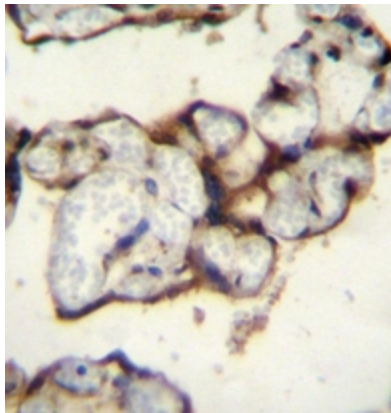
Product Type:	Primary Antibodies
Applications:	IHC, WB
Recommended Dilution:	ELISA: 1/1000. Western Blot: 150-1/100. Immunohistochemistry on Paraffin Sections: 1/10-1/50.
Reactivity:	Human
Host:	Rabbit
Isotype:	Ig
Clonality:	Polyclonal
Immunogen:	KLH conjugated synthetic peptide between 98-127 amino acids from the Central region of human PLCXD2
Specificity:	This antibody recognizes Human PLCXD2 (C-term).
Formulation:	PBS containing 0.09% (W/V) Sodium Azide as preservative State: Aff - Purified State: Liquid purified Ig fraction
Concentration:	lot specific
Purification:	Protein A column, followed by peptide affinity purification
Conjugation:	Unconjugated
Storage:	Store undiluted at 2-8°C for one month or (in aliquots) at -20°C for longer. Avoid repeated freezing and thawing.
Stability:	Shelf life: one year from despatch.
Gene Name:	phosphatidylinositol specific phospholipase C X domain containing 2
Database Link:	Entrez Gene 257068 Human Q0VAA5
Synonyms:	PI-PLC X domain-containing protein 2
Note:	Molecular Weight: 34777 Da



[View online »](#)

Product images:

Western blot analysis of PLCXD2 Antibody (Center) in K562 cell line lysates (35ug/lane). This demonstrates the PLCXD2 antibody detected the PLCXD2 protein (arrow).



Immunohistochemistry analysis in formalin fixed and paraffin embedded human placenta tissue reacted with, which was peroxidase conjugated to the secondary antibody and followed by DAB staining. This data demonstrates the use of PLCXD2 Antibody (Center) for immunohistochemistry. Clinical relevance has not been evaluated.