

Product datasheet for **AP53339PU-N**

PLCL2 (C-term) Rabbit Polyclonal Antibody

Product data:

Product Type:	Primary Antibodies
Applications:	FC, IF, IHC, WB
Recommended Dilution:	ELISA: 1/1000. Western Blot: 1/100-1/500. Flow Cytometry: 1/10-1/50. Immunofluorescence: 1/10-1/50. Immunohistochemistry on Paraffin Sections: 1/10-1/50.
Reactivity:	Human
Host:	Rabbit
Isotype:	Ig
Clonality:	Polyclonal
Immunogen:	KLH conjugated synthetic peptide between 1100-1127 amino acids from the C-terminal region of human PLCL2
Specificity:	This antibody recognizes Human PLCL2 (C-term).
Formulation:	PBS containing 0.09% (W/V) Sodium Azide as preservative State: Aff - Purified State: Liquid purified Ig fraction
Concentration:	lot specific
Purification:	Protein A column, followed by peptide affinity purification
Conjugation:	Unconjugated
Storage:	Store undiluted at 2-8°C for one month or (in aliquots) at -20°C for longer. Avoid repeated freezing and thawing.
Stability:	Shelf life: one year from despatch.
Gene Name:	Homo sapiens phospholipase C like 2 (PLCL2), transcript variant 1
Database Link:	Entrez Gene 23228 Human Q9UPR0
Background:	PLCL2 may play an role in the regulation of Ins(1,4,5)P3 around the endoplasmic reticulum (By similarity).



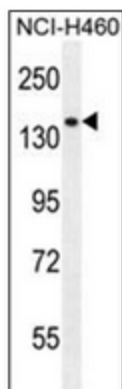
[View online »](#)

Synonyms: PLC-L2, PLCE2, Phospholipase C-epsilon-2, Phospholipase C epsilon 2, PLC-epsilon-2, Phospholipase C-L2

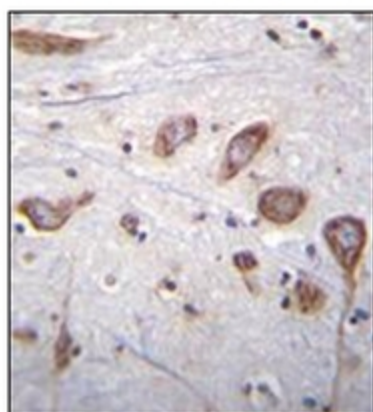
Note: **Molecular Weight:** 125866 Da

Protein Families: Druggable Genome

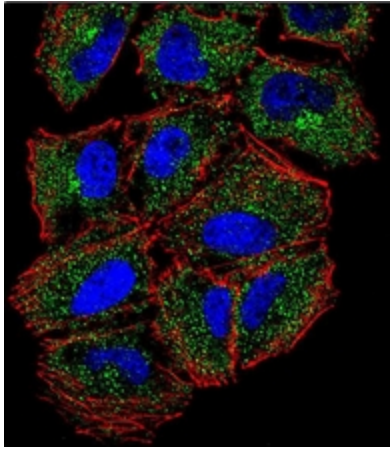
Product images:



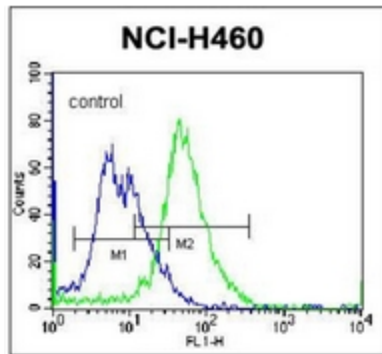
Western blot analysis of PLCL2 Antibody (C-term) in NCI-H460 cell line lysates (35ug/lane). This demonstrates the PLCL2 antibody detected the PLCL2 protein (arrow).



Immunohistochemistry analysis in formalin fixed and paraffin embedded human brain tissue reacted with PLCL2 Antibody (C-term), which was peroxidase conjugated to the secondary antibody and followed by DAB staining. This data demonstrates the use of PLCL2 Antibody (C-term) for immunohistochemistry. Clinical relevance has not been evaluated.



Confocal immunofluorescent analysis of PLCL2 Antibody (C-term) with NCI-H460 cell followed by Alexa Fluor 488-conjugated Goat anti-Rabbit IgG (green). Actin filaments have been labeled with Alexa Fluor 555 phalloidin (red). DAPI was used to stain the cell nuclear (blue).



Flow cytometric analysis of NCI-H460 cells using PLCL2 Antibody (C-term) (right histogram) compared to a negative control cell (left histogram). FITC-conjugated donkey-anti-rabbit secondary antibodies were used for the analysis.