

## Product datasheet for **AP53337PU-N**

### PLC delta 3 (PLCD3) (N-term) Rabbit Polyclonal Antibody

#### Product data:

Product Type:	Primary Antibodies
Applications:	WB
Recommended Dilution:	<b>ELISA:</b> 1/1000. <b>Western Blot:</b> 1/100-1/500.
Reactivity:	Human, Mouse
Host:	Rabbit
Isotype:	Ig
Clonality:	Polyclonal
Immunogen:	KLH conjugated synthetic peptide between 59-89 amino acids from the N-terminal region of human PLCD3
Specificity:	This antibody recognizes Human and Mouse PLCD3 (N-term).
Formulation:	PBS containing 0.09% (W/V) Sodium Azide as preservative State: Aff - Purified State: Liquid purified Ig fraction
Concentration:	lot specific
Purification:	Protein A column, followed by peptide affinity purification
Conjugation:	Unconjugated
Storage:	Store undiluted at 2-8°C for one month or (in aliquots) at -20°C for longer. Avoid repeated freezing and thawing.
Stability:	Shelf life: one year from despatch.
Gene Name:	phospholipase C delta 3
Database Link:	<a href="#">Entrez Gene 113026 Human Q8N3E9</a>



[View online »](#)

**Background:** This gene encodes a member of the phospholipase C family, which catalyze the hydrolysis of phosphatidylinositol 4,5-bisphosphate to generate the second messengers diacylglycerol and inositol 1,4,5-trisphosphate (IP3). Diacylglycerol and IP3 mediate a variety of cellular responses to extracellular stimuli by inducing protein kinase C and increasing cytosolic Ca<sup>2+</sup> concentrations. This enzyme localizes to the plasma membrane and requires calcium for activation. Its activity is inhibited by spermine, sphingosine, and several phospholipids. [provided by RefSeq].

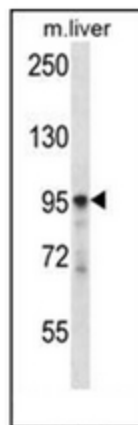
**Synonyms:** Phospholipase C-delta-3, Phospholipase C delta 3, PLC-delta-3

**Note:** **Molecular Weight:** 89258 Da

**Protein Families:** Druggable Genome

**Protein Pathways:** Calcium signaling pathway, Inositol phosphate metabolism, Metabolic pathways, Phosphatidylinositol signaling system

### Product images:



Western blot analysis of PLCD3 Antibody (N-term) in mouse liver tissue lysates (35ug/lane). This demonstrates the PLCD3 antibody detected the PLCD3 protein (arrow).