

Product datasheet for **AP53336PU-N**

PLCD1 (N-term) Rabbit Polyclonal Antibody

Product data:

Product Type:	Primary Antibodies
Applications:	WB
Recommended Dilution:	ELISA: 1/1,000. Western Blot 1/100-1/500.
Reactivity:	Human
Host:	Rabbit
Isotype:	Ig
Clonality:	Polyclonal
Immunogen:	KLH conjugated synthetic peptide between 154-184 amino acids from the N-terminal region of human PLCD1
Specificity:	This antibody recognizes Human PLCD1 (N-term).
Formulation:	PBS containing 0.09% (W/V) Sodium Azide as preservative State: Aff - Purified State: Liquid purified Ig fraction
Concentration:	lot specific
Purification:	Protein A column, followed by peptide affinity purification
Conjugation:	Unconjugated
Storage:	Store undiluted at 2-8°C for one month or (in aliquots) at -20°C for longer. Avoid repeated freezing and thawing.
Stability:	Shelf life: one year from despatch.
Gene Name:	phospholipase C delta 1
Database Link:	Entrez Gene 5333 Human P51178
Background:	Phosphoinositide-specific phospholipase C (PLC) acts as a signal transducer that generates 2 second messengers, diacylglycerol and inositol 1,4,5-trisphosphate, by hydrolyzing inositol phospholipids. PLC comprises a diverse family of enzymes that differ in structure and tissue distribution (Berridge, 1993 [PubMed 8381210]).
Synonyms:	Phospholipase C delta 1, PLC-delta-1, Phospholipase C-III, PLC-III, Phospholipase C-delta-1



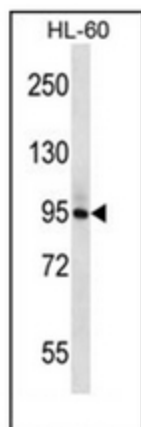
[View online »](#)

Note: **Molecular Weight:** 85665 Da

Protein Families: Druggable Genome

Protein Pathways: Calcium signaling pathway, Inositol phosphate metabolism, Metabolic pathways, Phosphatidylinositol signaling system

Product images:



Western blot analysis of PLCD1 Antibody (N-term) in HL-60 cell line lysates (35ug/lane). This demonstrates the PLCD1 antibody detected the PLCD1 protein (arrow)