

## Product datasheet for **AP53330PU-N**

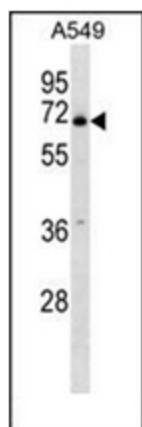
### PLBD2 (Center) Rabbit Polyclonal Antibody

#### Product data:

Product Type:	Primary Antibodies
Applications:	WB
Recommended Dilution:	<b>ELISA:</b> 1/1000. <b>Western Blot:</b> 1/100-1/500.
Reactivity:	Human
Host:	Rabbit
Isotype:	Ig
Clonality:	Polyclonal
Immunogen:	KLH conjugated synthetic peptide between 173-203 amino acids from the Central region of human PLBD2
Specificity:	This antibody recognizes Human PLBD2 (Center).
Formulation:	PBS containing 0.09% (W/V) Sodium Azide as preservative State: Aff - Purified State: Liquid purified Ig fraction
Concentration:	lot specific
Purification:	Protein A column, followed by peptide affinity purification
Conjugation:	Unconjugated
Storage:	Store undiluted at 2-8°C for one month or (in aliquots) at -20°C for longer. Avoid repeated freezing and thawing.
Stability:	Shelf life: one year from despatch.
Gene Name:	phospholipase B domain containing 2
Database Link:	<a href="#">Entrez Gene 196463 Human Q8NHP8</a>
Background:	PLBD2 is a putative phospholipase (By similarity).
Synonyms:	Putative phospholipase B-like 2
Note:	<b>Molecular Weight:</b> 65472 Da
Protein Families:	Transmembrane



[View online »](#)

**Product images:**

Western blot analysis of PLBD2 Antibody (Center) in A549 cell line lysates (35ug/lane). This demonstrates the PLBD2 antibody detected the PLBD2 protein (arrow).