

## Product datasheet for **AP53329PU-N**

### PLAG1 (N-term) Rabbit Polyclonal Antibody

#### Product data:

Product Type:	Primary Antibodies
Applications:	WB
Recommended Dilution:	<b>Western blot:</b> 1/100-1/500. Enzyme immunoassay: 1/1000.
Reactivity:	Human
Host:	Rabbit
Isotype:	Ig
Clonality:	Polyclonal
Immunogen:	Synthetic peptide - KLH conjugated - corresponding to the N-terminal region (between 15-44aa) of human PLAG1.
Specificity:	This antibody recognizes PLAG1 at N-term.
Formulation:	PBS with 0.09% (W/V) Sodium azide State: Aff - Purified State: Liquid purified Ig fraction
Concentration:	lot specific
Purification:	Purified through a Protein A column followed by peptide affinity purification
Conjugation:	Unconjugated
Storage:	Store undiluted at 2-8°C for one month or (in aliquots) at -20°C for longer. Avoid repeated freezing and thawing.
Stability:	Shelf life: one year from despatch.
Gene Name:	PLAG1 zinc finger
Database Link:	<a href="#">Entrez Gene 5324 Human Q6DJT9</a>



[View online »](#)

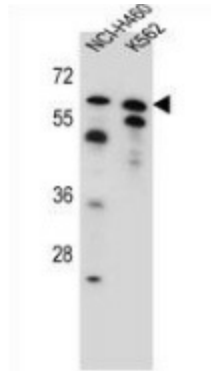
**Background:** Pleomorphic adenoma gene 1 encodes a zinc finger protein with 2 putative nuclear localization signals. PLAG1, which is developmentally regulated, has been shown to be consistently rearranged in pleomorphic adenomas of the salivary glands. PLAG1 is activated by the reciprocal chromosomal translocations involving 8q12 in a subset of salivary gland pleomorphic adenomas. Three transcript variants encoding two different isoforms have been found for this gene.

**Synonyms:** PSA; SGPA

**Note:** **Molecular Weight:** 55909 Da

**Protein Families:** Transcription Factors

**Product images:**



Western blot analysis in NCI-H460, K562 cell line lysates (35ug/lane) using PLAG1 antibody. (N-term). This demonstrates the PLAG1 antibody detected the PLAG1 protein (arrow).