

Product datasheet for **AP53326PU-N**

Calcium independent Phospholipase A2 (PLA2G6) (Center) Rabbit Polyclonal Antibody

Product data:

Product Type:	Primary Antibodies
Applications:	FC, IF, IHC, WB
Recommended Dilution:	Flow cytometry: 1/10-1/50. Immunofluorescence: 1/10-1/50. Immunohistochemistry on Paraffin sections: 1/50-1/100. Western blot: 1/50-1/100.
Reactivity:	Human
Host:	Rabbit
Isotype:	Ig
Clonality:	Polyclonal
Immunogen:	Synthetic peptide - KLH conjugated - corresponding to the central region (between 558-588aa) of human PLA2G6.
Specificity:	This antibody recognizes PLA2G6.
Formulation:	PBS with 0.09% (W/V) Sodium azide State: Purified State: Liquid purified Ig fraction
Concentration:	lot specific
Purification:	Prepared by Saturated Ammonium Sulfate (SAS) precipitation followed by dialysis against PBS
Conjugation:	Unconjugated
Storage:	Store undiluted at 2-8°C for one month or (in aliquots) at -20°C for longer. Avoid repeated freezing and thawing.
Stability:	Shelf life: one year from despatch.
Gene Name:	phospholipase A2 group VI
Database Link:	Entrez Gene 8398 Human O60733



[View online »](#)

Background:

The protein encoded by the PLA2G6 gene is an A2 phospholipase, a class of enzyme that catalyzes the release of fatty acids from phospholipids. The encoded protein may play a role in phospholipid remodelling, arachidonic acid release, leukotriene and prostaglandin synthesis, fas-mediated apoptosis, and transmembrane ion flux in glucose-stimulated B-cells.

Synonyms:

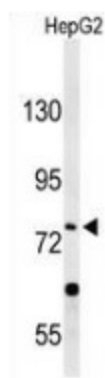
IPLA2, Cal-PLA2, GVI PLA2, Group VI phospholipase A2, PARK14

Note:

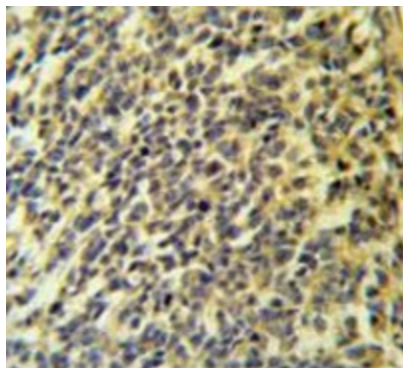
Molecular Weight: 89903 Da

Protein Pathways:

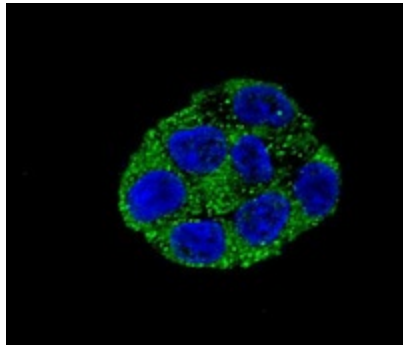
alpha-Linolenic acid metabolism, Arachidonic acid metabolism, Ether lipid metabolism, Fc epsilon RI signaling pathway, Fc gamma R-mediated phagocytosis, Glycerophospholipid metabolism, GnRH signaling pathway, Linoleic acid metabolism, Long-term depression, MAPK signaling pathway, Metabolic pathways, Vascular smooth muscle contraction, VEGF signaling pathway

Product images:

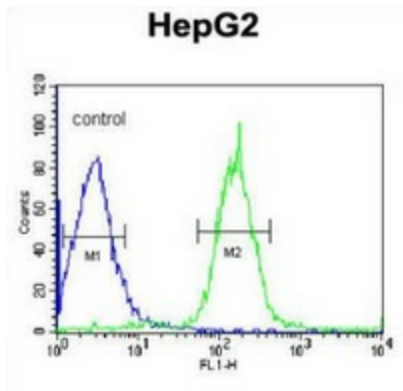
Western blot analysis of PLA2G6 (arrow) in HepG2 cell line lysates (35ug/lane) using PLA2G6 antibody.



Immunohistochemistry analysis in testis carcinoma (Formalin-fixed, Paraffin-embedded) using PLA2G6 antibody., followed by peroxidase conjugated secondary antibody and DAB staining. This data demonstrates the use of the PLA2G6 antibody for IHC. Clinical relevance has not been evaluated.



Confocal immunofluorescent analysis with HepG2 cell using PLA2G6 antibody., followed by Alexa Fluor® 488-conjugated goat anti-rabbit IgG (green). DAPI was used to stain the cell nuclear (blue).



Flow cytometric analysis of HepG2 cells (right histogram) compared to a negative control cell (left histogram) using PLA2G6 antibody., followed by FITC-conjugated goat-anti-rabbit secondary antibodies.