

Product datasheet for **AP53324PU-N**

PLA2G2D (C-term) Rabbit Polyclonal Antibody

Product data:

Product Type:	Primary Antibodies
Applications:	FC, IHC, WB
Recommended Dilution:	ELISA: 1/1000. Western Blot: 1/100-1/500. Flow Cytometry: 1/10-50. Immunohistochemistry on Paraffin Sections: 1/50-1/100.
Reactivity:	Human
Host:	Rabbit
Isotype:	Ig
Clonality:	Polyclonal
Immunogen:	KLH conjugated synthetic peptide between 112-138 amino acids from the C-terminal region of human PLA2G2D
Specificity:	This antibody recognizes Human PLA2G2D (C-term).
Formulation:	PBS containing 0.09% (W/V) Sodium Azide as preservative State: Aff - Purified State: Liquid purified Ig fraction
Concentration:	lot specific
Purification:	Protein A column, followed by peptide affinity purification
Conjugation:	Unconjugated
Storage:	Store undiluted at 2-8°C for one month or (in aliquots) at -20°C for longer. Avoid repeated freezing and thawing.
Stability:	Shelf life: one year from despatch.
Gene Name:	phospholipase A2 group IID
Database Link:	Entrez Gene 26279 Human Q9UNK4
Background:	Transposase-derived protein that may have nuclease activity (Potential). Does not have transposase activity.
Synonyms:	Phospholipase A2 group IID, PLA2IID, SPLASH, GIID sPLA2, sPLA2-IIID



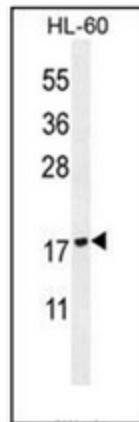
[View online »](#)

Note: **Molecular Weight:** 16546 Da

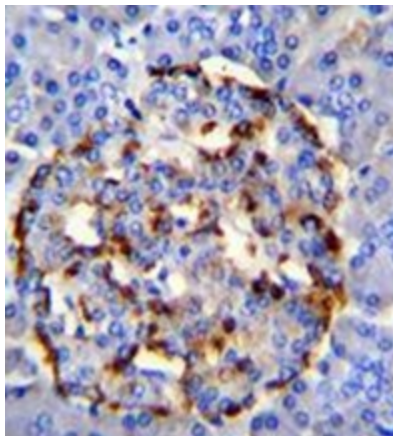
Protein Families: Druggable Genome, Secreted Protein, Transmembrane

Protein Pathways: alpha-Linolenic acid metabolism, Arachidonic acid metabolism, Ether lipid metabolism, Fc epsilon RI signaling pathway, Glycerophospholipid metabolism, GnRH signaling pathway, Linoleic acid metabolism, Long-term depression, MAPK signaling pathway, Metabolic pathways, Vascular smooth muscle contraction, VEGF signaling pathway

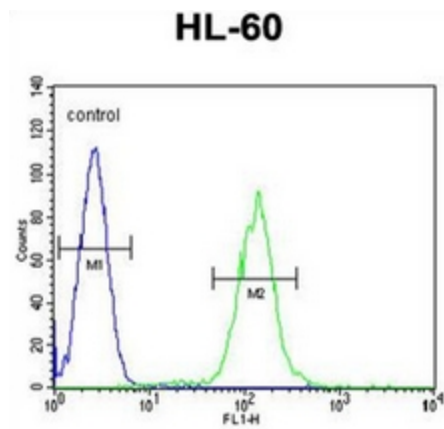
Product images:



Western blot analysis of PLA2G2D Antibody (C-term) in HL-60 cell line lysates (35ug/lane). This demonstrates the PLA2G2D antibody detected the PLA2G2D protein (arrow).



Immunohistochemistry analysis in formalin fixed and paraffin embedded human pancreas tissue reacted with PLA2G2D Antibody (C-term), which peroxidase conjugated to the secondary antibody and was followed by DAB staining. This data demonstrates the use of PLA2G2D Antibody (C-term) for immunohistochemistry. Clinical relevance has not been evaluated.



Flow cytometric analysis of HL-60 cells using PLA2G2D Antibody (C-term) (right histogram) compared to a negative control cell (left histogram). FITC-conjugated goat-anti-rabbit secondary antibodies were used for the analysis.