

## Product datasheet for **AP53323PU-N**

### PLA2G2C (C-term) Rabbit Polyclonal Antibody

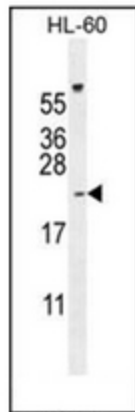
#### Product data:

Product Type:	Primary Antibodies
Applications:	FC, IHC, WB
Recommended Dilution:	<b>ELISA:</b> 1/1000. <b>Western Blot:</b> 1/100-1/500. <b>Flow Cytometry:</b> 1/10-50. <b>Immunohistochemistry on Paraffin Sections:</b> 1/10-1/50.
Reactivity:	Human
Host:	Rabbit
Isotype:	Ig
Clonality:	Polyclonal
Immunogen:	KLH conjugated synthetic peptide between 121-149 amino acids from the C-terminal region of human PLA2G2C
Specificity:	This antibody recognizes Human PLA2G2C (C-term).
Formulation:	PBS containing 0.09% (W/V) Sodium Azide as preservative State: Aff - Purified State: Liquid purified Ig fraction
Concentration:	lot specific
Purification:	Protein A column, followed by peptide affinity purification
Conjugation:	Unconjugated
Storage:	Store undiluted at 2-8°C for one month or (in aliquots) at -20°C for longer. Avoid repeated freezing and thawing.
Stability:	Shelf life: one year from despatch.
Database Link:	<a href="#">Q5R387</a>
Background:	PLA2G2C is a inactive phospholipase (Probable).
Note:	<b>Molecular Weight:</b> 16844 Da

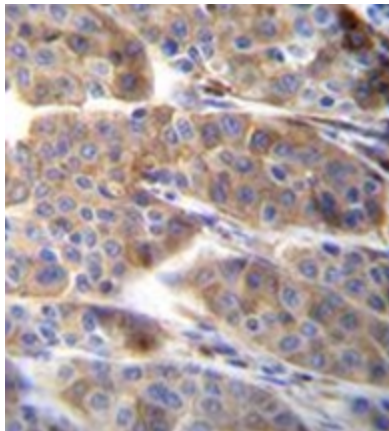


[View online »](#)

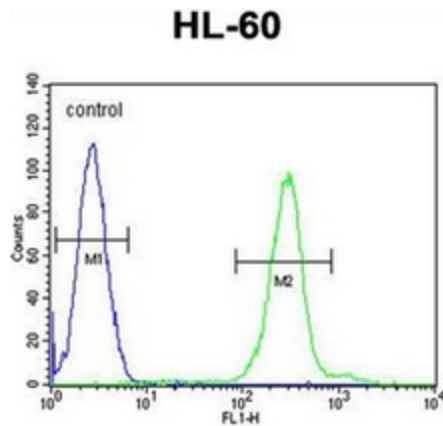
**Product images:**



Western blot analysis of PLA2G2C Antibody (C-term) Cat.-No AP53323PU-N in HL-60 cell line lysates (35ug/lane). This demonstrates the PLA2G2C antibody detected the PLA2G2C protein (arrow).



Immunohistochemistry analysis in formalin fixed and paraffin embedded human melanoma reacted with PLA2G2C Antibody (C-term) Cat.-No AP53323PU-N, which was peroxidase conjugated to the secondary antibody and followed by DAB staining. This data demonstrates the



Flow cytometric analysis of HL-60 cells using PLA2G2C Antibody (C-term) Cat.-No AP53323PU-N (right histogram) compared to a negative control cell (left histogram). FITC-conjugated goat-anti-rabbit secondary antibodies were used for the analysis.