

Product datasheet for **AP53322PU-N**

PLA2G12A (Center) Rabbit Polyclonal Antibody

Product data:

Product Type:	Primary Antibodies
Applications:	WB
Recommended Dilution:	ELISA: 1/1000. Western Blot: 1/100-1/500.
Reactivity:	Human
Host:	Rabbit
Isotype:	Ig
Clonality:	Polyclonal
Immunogen:	KLH conjugated synthetic peptide between 54-83 amino acids from the Central region of human PLA2G12A
Specificity:	This antibody recognizes Human PLA2G12A (Center).
Formulation:	PBS containing 0.09% (W/V) Sodium Azide as preservative State: Aff - Purified State: Liquid purified Ig fraction
Concentration:	lot specific
Purification:	Protein A column, followed by peptide affinity purification
Conjugation:	Unconjugated
Storage:	Store undiluted at 2-8°C for one month or (in aliquots) at -20°C for longer. Avoid repeated freezing and thawing.
Stability:	Shelf life: one year from despatch.
Gene Name:	phospholipase A2 group XIIA
Database Link:	Entrez Gene 81579 Human Q9BZM1
Background:	Secreted phospholipase A2 (sPLA2) enzymes liberate arachidonic acid from phospholipids for production of eicosanoids and exert a variety of physiologic and pathologic effects. Group XII sPLA2s, such as PLA2G12A, have relatively low specific activity and are structurally and functionally distinct from other sPLA2s (Gelb et al., 2000 [PubMed 11031251]).
Synonyms:	Phospholipase A2 group XIIA, PLA2G12, GXII sPLA2, sPLA2-XII

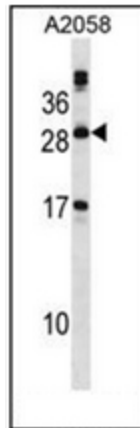


[View online »](#)

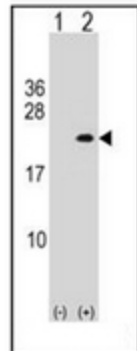
Note: **Molecular Weight:** 21067 Da

Protein Families: Druggable Genome, Secreted Protein

Protein Pathways: alpha-Linolenic acid metabolism, Arachidonic acid metabolism, Ether lipid metabolism, Fc epsilon RI signaling pathway, Glycerophospholipid metabolism, GnRH signaling pathway, Linoleic acid metabolism, Long-term depression, MAPK signaling pathway, Metabolic pathways, Vascular smooth muscle contraction, VEGF signaling pathway

Product images:

Western blot analysis of PLA2G12A Antibody (Center) in A2058 cell line lysates (35ug/lane). This demonstrates the PLA2G12A antibody detected the PLA2G12A protein (arrow).



Western blot analysis of PLA2G12A (arrow) using PLA2G12A Antibody (Center). 293 cell lysates (2 ug/lane) either nontransfected (Lane 1) or transiently transfected (Lane 2) with the PLA2G12A gene.