

Product datasheet for **AP53321PU-N**

PLA1A (Center) Rabbit Polyclonal Antibody

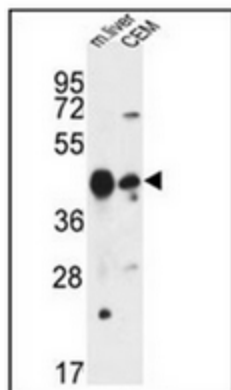
Product data:

Product Type:	Primary Antibodies
Applications:	WB
Recommended Dilution:	ELISA: 1/1000. Western Blot: 1/100-1/500.
Reactivity:	Human, Mouse
Host:	Rabbit
Isotype:	Ig
Clonality:	Polyclonal
Immunogen:	KLH conjugated synthetic peptide between 336~366 amino acids from the Central region of human PLA1A
Specificity:	This antibody recognizes Human and Mouse PLA1A (Center).
Formulation:	PBS containing 0.09% (W/V) Sodium Azide as preservative State: Aff - Purified State: Liquid purified Ig fraction
Concentration:	lot specific
Purification:	Protein A column, followed by peptide affinity purification
Conjugation:	Unconjugated
Storage:	Store undiluted at 2-8°C for one month or (in aliquots) at -20°C for longer. Avoid repeated freezing and thawing.
Stability:	Shelf life: one year from despatch.
Gene Name:	phospholipase A1 member A
Database Link:	Entrez Gene 85031 Mouse Entrez Gene 51365 Human Q53H76
Background:	Phosphatidylserine-specific phospholipase A1-alpha (PLA1A) acts specifically on phosphatidylserine (PS) and 1-acyl-2-lysophosphatidylserine (lyso-PS) to hydrolyze fatty acids at the sn-1 position of these phospholipids.
Synonyms:	NMD, PSPLA1, Phospholipase A1 member A



[View online »](#)

Note: **Molecular Weight:** 49715 Da
Protein Families: Druggable Genome, Secreted Protein

Product images:

Western blot analysis of PLA1A Antibody (Center) in mouse liver tissue and CEM cell line lysates (35ug/lane). This demonstrates the PLA1A antibody detected the PLA1A protein (arrow).