

Product datasheet for **AP53318PU-N**

PKM2 (PKM) (N-term) Rabbit Polyclonal Antibody

Product data:

Product Type:	Primary Antibodies
Applications:	FC, IHC, WB
Recommended Dilution:	ELISA: 1/1000. Western Blot: 1/100-1/500. Flow Cytometry: 1/10-1/50. Immunohistochemistry on Paraffin Sections: 1/50-1/100.
Reactivity:	Human
Host:	Rabbit
Isotype:	Ig
Clonality:	Polyclonal
Immunogen:	KLH conjugated synthetic peptide between 123~153 amino acids from the N-terminal region of Human PKM2.
Specificity:	This antibody recognizes Human PKM2 (N-term).
Formulation:	PBS State: Purified State: Liquid purified Ig fraction Preservative: 0.09% Sodium Azide
Concentration:	lot specific
Purification:	Saturated Ammonium Sulfate (SAS) precipitation followed by dialysis against PBS
Conjugation:	Unconjugated
Storage:	Store undiluted at 2-8°C for one month or (in aliquots) at -20°C for longer. Avoid repeated freezing and thawing.
Stability:	Shelf life: one year from despatch.
Gene Name:	pyruvate kinase, muscle
Database Link:	Entrez Gene 5315 Human P14618



[View online »](#)

Background: PKM2 encodes a protein involved in glycolysis. The encoded protein is a pyruvate kinase that catalyzes the transfer of a phosphoryl group from phosphoenolpyruvate to ADP, generating ATP and pyruvate. This protein has been shown to interact with thyroid hormone and may mediate cellular metabolic effects induced by thyroid hormones. This protein has been found to bind Opa protein, a bacterial outer membrane protein involved in gonococcal adherence to and invasion of human cells, suggesting a role of this protein in bacterial pathogenesis.

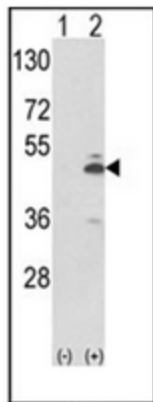
Synonyms: PK2, PK3, PKM, CTHBP, M2-PK, THBP1, OIP3, OIP-3, Pyruvate kinase 2/3, Pyruvate kinase M1/M2, Pyruvate kinase muscle

Note: **Molecular Weight:** 57937 Da

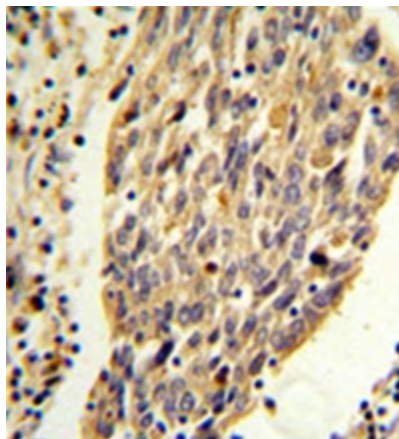
Protein Families: Druggable Genome

Protein Pathways: Glycolysis / Gluconeogenesis, Metabolic pathways, Purine metabolism, Pyruvate metabolism, Type II diabetes mellitus

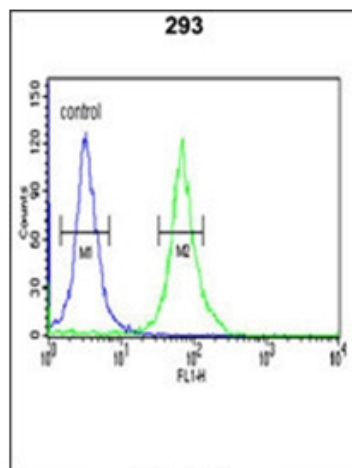
Product images:



Western blot analysis of PKM2 (arrow) using PKM2 Antibody (N-term). 293 cell lysates (2 ug/lane) either nontransfected (Lane 1) or transiently transfected with the PKM2 gene (Lane 2).



Formalin fixed, paraffin embedded human lung carcinoma stained with KM2 Antibody (N-term) followed by peroxidase conjugation of the secondary antibody and DAB staining.



Flow cytometric analysis of 293 cells using KM2 Antibody (N-term) (right histogram) compared to a negative control cell (left histogram). FITC-conjugated goat-anti-rabbit secondary antibodies were used for the analysis.