

Product datasheet for **AP53316PU-N**

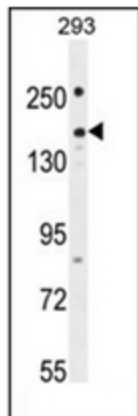
PLEKHG1 (C-term) Rabbit Polyclonal Antibody

Product data:

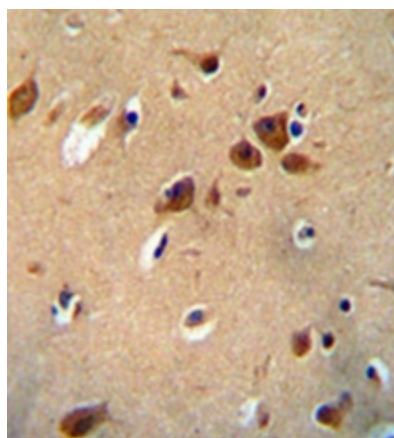
Product Type:	Primary Antibodies
Applications:	IHC, WB
Recommended Dilution:	ELISA: 1/1000. Western Blot: 1/100-1/500. Immunohistochemistry on Paraffin Sections: 1/50-1/100.
Reactivity:	Human
Host:	Rabbit
Isotype:	Ig
Clonality:	Polyclonal
Immunogen:	KLH conjugated synthetic peptide between 1276-1306 amino acids from the C-terminal region of human PKHG1
Specificity:	This antibody recognizes Human PKHG1 (C-term).
Formulation:	PBS containing 0.09% (W/V) Sodium Azide as preservative State: Aff - Purified State: Liquid purified Ig fraction
Concentration:	lot specific
Purification:	Protein A column, followed by peptide affinity purification
Conjugation:	Unconjugated
Storage:	Store undiluted at 2-8°C for one month or (in aliquots) at -20°C for longer. Avoid repeated freezing and thawing.
Stability:	Shelf life: one year from despatch.
Gene Name:	pleckstrin homology and RhoGEF domain containing G1
Database Link:	Entrez Gene 57480 Human Q9ULL1
Synonyms:	Pleckstrin homology domain-containing family G member 1, PLEKHG1, KIAA1209
Note:	Molecular Weight: 155439 Da



[View online »](#)

Product images:

Western blot analysis of PKHG1 Antibody (C-term) in 293 cell line lysates (35ug/lane). This demonstrates the PKHG1 antibody detected the PKHG1 protein (arrow).



Immunohistochemistry analysis in formalin fixed and paraffin embedded human brain tissue reacted with PKHG1 Antibody (C-term), which was peroxidase conjugated to the secondary antibody and followed by DAB staining. This data demonstrates the use of the PKHG1 Antibody (C-term) for immunohistochemistry. Clinical relevance has not been evaluated