

## Product datasheet for **AP53315PU-N**

### PKD2L1 (N-term) Rabbit Polyclonal Antibody

#### Product data:

Product Type:	Primary Antibodies
Applications:	WB
Recommended Dilution:	<b>ELISA:</b> 1/1000. <b>Western Blot:</b> 1/100-1/500.
Reactivity:	Human
Host:	Rabbit
Isotype:	Ig
Clonality:	Polyclonal
Immunogen:	KLH conjugated synthetic peptide between 36-65 amino acids from the N-terminal region of human PKD2L1
Specificity:	This antibody recognizes Human PKD2L1 (N-term).
Formulation:	PBS containing 0.09% (W/V) Sodium Azide as preservative State: Aff - Purified State: Liquid purified Ig fraction
Concentration:	lot specific
Purification:	Protein A column, followed by peptide affinity purification
Conjugation:	Unconjugated
Storage:	Store undiluted at 2-8°C for one month or (in aliquots) at -20°C for longer. Avoid repeated freezing and thawing.
Stability:	Shelf life: one year from despatch.
Gene Name:	polycystin 2 like 1, transient receptor potential cation channel
Database Link:	<a href="#">Entrez Gene 9033 Human Q9P0L9</a>
Background:	PKD2L1 is a member of the polycystin protein family. The encoded protein contains multiple transmembrane domains, and cytoplasmic N- and C-termini. The protein may be an integral membrane protein involved in cell-cell/matrix interactions. This protein functions as a calcium-regulated nonselective cation channel. Alternative splice variants have been described but their full length sequences have not been determined.



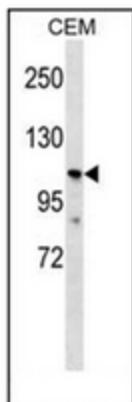
[View online »](#)

**Synonyms:** PKD2L, PKDL, Polycystin-2 homolog, Polycystin-2L1, Polycystin-L, Polycystin-L1

**Note:** **Molecular Weight:** 91982 Da

**Protein Families:** Druggable Genome, Ion Channels: Transient receptor potential, Transmembrane

**Product images:**



Western blot analysis of PKD2L1 Antibody (N-term) in CEM cell line lysates (35ug/lane). This demonstrates the PKD2L1 antibody detected the PKD2L1 protein (arrow).