

Product datasheet for **AP53312PU-N**

PITRM1 (Center) Rabbit Polyclonal Antibody

Product data:

Product Type:	Primary Antibodies
Applications:	WB
Recommended Dilution:	ELISA: 1/1000. Western Blot: 1/100-1/500.
Reactivity:	Human
Host:	Rabbit
Isotype:	Ig
Clonality:	Polyclonal
Immunogen:	KLH conjugated synthetic peptide between 497-526 amino acids from the Central region of human PITRM1
Specificity:	This antibody recognizes Human PITRM1 (Center).
Formulation:	PBS containing 0.09% (W/V) Sodium Azide as preservative State: Aff - Purified State: Liquid purified Ig fraction
Concentration:	lot specific
Purification:	Protein A column, followed by peptide affinity purification
Conjugation:	Unconjugated
Storage:	Store undiluted at 2-8°C for one month or (in aliquots) at -20°C for longer. Avoid repeated freezing and thawing.
Stability:	Shelf life: one year from despatch.
Gene Name:	pitrilysin metalloproteinase 1
Database Link:	Entrez Gene 10531 Human Q5JRX3
Background:	ATP-independent protease that degrades mitochondrial transit peptides after their cleavage. Also degrades other unstructured peptides. Specific for peptides in the range of 10 to 65 residues. Able to degrade amyloid beta A4 (APP) protein when it accumulates in mitochondrion, suggesting a link with Alzheimer disease. Shows a preference for cleavage after small polar residues and before basic residues, but without any positional preference.

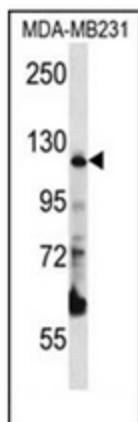


[View online »](#)

Synonyms: Pitrilysin metalloproteinase 1, Metalloprotease 1, MP1, KIAA1104

Note: **Molecular Weight:** 117455 Da

Product images:



Western blot analysis of PITRM1 Antibody (Center) Cat.-NoAP53312PU-Nin MDA-MB231 cell line lysates (35ug/lane). This demonstrates the PITRM1 antibody detected the PITRM1 protein (arrow).