

Product datasheet for **AP53310PU-N**

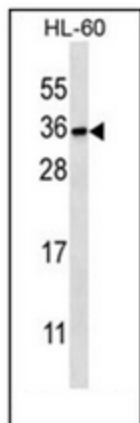
PITPNB (C-term) Rabbit Polyclonal Antibody

Product data:

Product Type:	Primary Antibodies
Applications:	WB
Recommended Dilution:	ELISA: 1/1000. Western Blot: 1/100-1/500.
Reactivity:	Human
Host:	Rabbit
Isotype:	Ig
Clonality:	Polyclonal
Immunogen:	KLH conjugated synthetic peptide between 225-254 amino acids from the C-terminal region of human PITPNB
Specificity:	This antibody recognizes Human PITPNB (C-term).
Formulation:	PBS containing 0.09% (W/V) Sodium Azide as preservative State: Aff - Purified State: Liquid purified Ig fraction
Concentration:	lot specific
Purification:	Protein A column, followed by peptide affinity purification
Conjugation:	Unconjugated
Storage:	Store undiluted at 2-8°C for one month or (in aliquots) at -20°C for longer. Avoid repeated freezing and thawing.
Stability:	Shelf life: one year from despatch.
Gene Name:	phosphatidylinositol transfer protein beta
Database Link:	Entrez Gene 23760 Human P48739
Background:	The protein encoded by this gene is found in the cytoplasm, where it catalyzes the transfer of phosphatidylinositol and phosphatidylcholine between membranes.
Synonyms:	PI-TP-beta, PtdInsTP beta
Note:	Molecular Weight: 31540 Da



[View online »](#)

Product images:

Western blot analysis of PITPNB Antibody (C-term) in HL-60 cell line lysates (35ug/lane). This demonstrates the PITPNB antibody detected the PITPNB protein (arrow).