

Product datasheet for **AP53303PU-N**

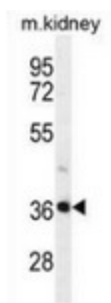
PIH1D2 (C-term) Rabbit Polyclonal Antibody

Product data:

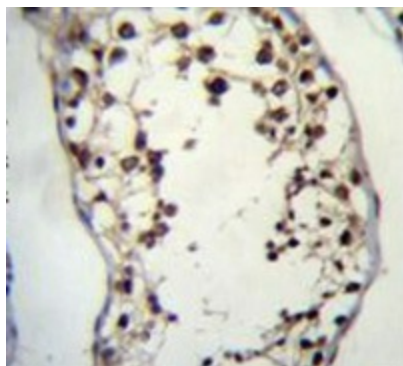
| | |
|-----------------------|---|
| Product Type: | Primary Antibodies |
| Applications: | IHC, WB |
| Recommended Dilution: | Immunohistochemistry on Paraffin sections: 1/50-1/100. Western blot: 1/100-1/500. Enzyme immunoassay: 1/1000. |
| Reactivity: | Human, Mouse |
| Host: | Rabbit |
| Isotype: | Ig |
| Clonality: | Polyclonal |
| Immunogen: | Synthetic peptide - KLH conjugated - corresponding to the C-terminal region (between 227-257aa) of human PIH1D2. |
| Specificity: | This antibody recognizes PIH1D2 at C-term. |
| Formulation: | PBS with 0.09% (W/V) Sodium azide State: Aff - Purified State: Liquid purified Ig fraction |
| Concentration: | lot specific |
| Purification: | Purified through a Protein A column followed by peptide affinity purification |
| Conjugation: | Unconjugated |
| Storage: | Store undiluted at 2-8°C for one month or (in aliquots) at -20°C for longer. Avoid repeated freezing and thawing. |
| Stability: | Shelf life: one year from despatch. |
| Gene Name: | PIH1 domain containing 2 |
| Database Link: | Entrez Gene 120379 Human Q8WWB5 |
| Synonyms: | PIH1D2 |
| Note: | Molecular Weight: 35957 Da |



[View online »](#)

Product images:

Western blot analysis in mouse kidney tissue lysates (35ug/lane) using PIH1D2 antibody. (C-term). This demonstrates the PIH1D2 antibody detected the PIH1D2 protein (arrow).



Immunohistochemistry analysis in human testis tissue (Formalin-fixed, Paraffin-embedded) using PIH1D2 antibody. (C-term), followed by peroxidase conjugated secondary antibody and DAB staining. This data demonstrates the use of PIH1D2 antibody for IHC. Clinical relevance has not been evaluated.