

Product datasheet for **AP53301PU-N**

PIGV (C-term) Rabbit Polyclonal Antibody

Product data:

Product Type:	Primary Antibodies
Applications:	WB
Recommended Dilution:	Western blot: 1/100-1/500. Enzyme immunoassay: 1/1000.
Reactivity:	Human
Host:	Rabbit
Isotype:	Ig
Clonality:	Polyclonal
Immunogen:	Synthetic peptide - KLH conjugated - corresponding to the C-terminal region (between 342-371aa) of human PIGV.
Specificity:	This antibody recognizes PIGV at C-term.
Formulation:	PBS with 0.09% (W/V) Sodium azide State: Aff - Purified State: Liquid purified Ig fraction
Concentration:	lot specific
Purification:	Purified through a Protein A column followed by peptide affinity purification
Conjugation:	Unconjugated
Storage:	Store undiluted at 2-8°C for one month or (in aliquots) at -20°C for longer. Avoid repeated freezing and thawing.
Stability:	Shelf life: one year from despatch.
Gene Name:	phosphatidylinositol glycan anchor biosynthesis class V
Database Link:	Entrez Gene 55650 Human Q9NUD9
Background:	Glycosylphosphatidylinositol (GPI) is a complex glycolipid that anchors many proteins to the cell surface. The biosynthetic pathway of GPI is mediated by sequential addition of sugars and other components to phosphatidylinositol. PIGV adds the second mannose to the GPI core [<i>Kang et al., 2005 PubMed 15623507</i>].
Synonyms:	PIG-V, GPI mannosyltransferase 2, GPI-MT-II



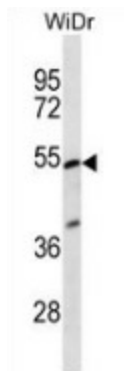
[View online »](#)

Note: **Molecular Weight:** 55713 Da

Protein Families: Transmembrane

Protein Pathways: Glycosylphosphatidylinositol(GPI)-anchor biosynthesis, Metabolic pathways

Product images:



Western blot analysis in WiDr cell line lysates (35ug/lane) using PIGV antibody. (C-term). This demonstrates the PIGV antibody detected the PIGV protein (arrow).