

Product datasheet for **AP53299PU-N**

PIGP (N-term) Rabbit Polyclonal Antibody

Product data:

Product Type:	Primary Antibodies
Applications:	WB
Recommended Dilution:	Western blot: 1/1000.
Reactivity:	Human
Host:	Rabbit
Isotype:	Ig
Clonality:	Polyclonal
Immunogen:	Synthetic peptide - KLH conjugated - corresponding to the N-terminal region (between 2-30 aa) of human PIGP.
Specificity:	This antibody recognizes PIGP at N-term.
Formulation:	PBS with 0.09% (W/V) Sodium azide State: Aff - Purified State: Liquid purified Ig fraction
Concentration:	lot specific
Purification:	Purified through a Protein A column followed by peptide affinity purification
Conjugation:	Unconjugated
Storage:	Store undiluted at 2-8°C for one month or (in aliquots) at -20°C for longer. Avoid repeated freezing and thawing.
Stability:	Shelf life: one year from despatch.
Gene Name:	phosphatidylinositol glycan anchor biosynthesis class P
Database Link:	Entrez Gene 51227 Human P57054



[View online »](#)

Background:

The PIGP gene encodes an enzyme involved in the first step of glycosylphosphatidylinositol (GPI)-anchor biosynthesis. The GPI-anchor is a glycolipid found on many blood cells that serves to anchor proteins to the cell surface. The encoded protein is a component of the GPI-N-acetylglucosaminyltransferase complex that catalyzes the transfer of N-acetylglucosamine (GlcNAc) from UDP-GlcNAc to phosphatidylinositol (PI). This gene is located in the Down Syndrome critical region on chromosome 21 and is a candidate for the pathogenesis of Down syndrome. Alternatively spliced transcript variants encoding different isoforms have been described.

Synonyms:

DSCR5, DCRC, DSCRC, DCRC-S, Down syndrome critical region protein 5

Note:

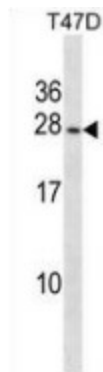
Molecular Weight: 18059 Da

Protein Families:

Transmembrane

Protein Pathways:

Glycosylphosphatidylinositol(GPI)-anchor biosynthesis, Metabolic pathways

Product images:

Western blot analysis in T47D cell line lysates (35ug/lane) using PIGP antibody. (N-term). This demonstrates the PIGP antibody detected the PIGP protein (arrow).