

Product datasheet for **AP53297PU-N**

PIGL (N-term) Rabbit Polyclonal Antibody

Product data:

Product Type:	Primary Antibodies
Applications:	WB
Recommended Dilution:	Western blot: 1/100-1/500. Enzyme immunoassay: 1/1000.
Reactivity:	Human
Host:	Rabbit
Isotype:	Ig
Clonality:	Polyclonal
Immunogen:	Synthetic peptide - KLH conjugated - corresponding to the N-terminal region (between 7-37aa) of human PIGL.
Specificity:	This antibody recognizes PIGL at N-term .
Formulation:	PBS with 0.09% (W/V) Sodium azide State: Aff - Purified State: Liquid purified Ig fraction
Concentration:	lot specific
Purification:	Purified through a Protein A column followed by peptide affinity purification
Conjugation:	Unconjugated
Storage:	Store undiluted at 2-8°C for one month or (in aliquots) at -20°C for longer. Avoid repeated freezing and thawing.
Stability:	Shelf life: one year from despatch.
Gene Name:	phosphatidylinositol glycan anchor biosynthesis class L
Database Link:	Entrez Gene 9487 Human Q9Y2B2
Background:	The PIGL gene encodes an enzyme that catalyzes the second step of glycosylphosphatidylinositol (GPI) biosynthesis, which is the de-N-acetylation of N-acetylglucosaminylphosphatidylinositol (GlcNAc-PI). Study of a similar rat enzyme suggests that this protein localizes to the endoplasmic reticulum
Synonyms:	PIG-L



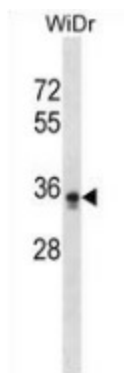
[View online »](#)

Note: **Molecular Weight:** 28531 Da

Protein Families: Transmembrane

Protein Pathways: Glycosylphosphatidylinositol(GPI)-anchor biosynthesis, Metabolic pathways

Product images:



Western blot analysis in WiDr cell line lysates (35ug/lane) using PIGL antibody. (N-term). This demonstrates the PIGL antibody detected the PIGL protein (arrow).