

Product datasheet for **AP53292PU-N**

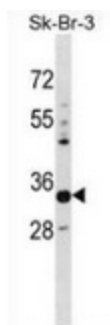
PHYHD1 (C-term) Rabbit Polyclonal Antibody

Product data:

Product Type:	Primary Antibodies
Applications:	WB
Recommended Dilution:	Western blot: 1/100-1/500. Enzyme immunoassay: 1/1000.
Reactivity:	Human
Host:	Rabbit
Isotype:	Ig
Clonality:	Polyclonal
Immunogen:	Synthetic peptide - KLH conjugated - corresponding to the C-terminal region (between 231-260aa) of human PHYHD1.
Specificity:	This antibody recognizes PHYHD1 at C-term.
Formulation:	PBS with 0.09% (W/V) Sodium azide State: Aff - Purified State: Liquid purified Ig fraction
Concentration:	lot specific
Purification:	Purified through a Protein A column followed by peptide affinity purification
Conjugation:	Unconjugated
Storage:	Store undiluted at 2-8°C for one month or (in aliquots) at -20°C for longer. Avoid repeated freezing and thawing.
Stability:	Shelf life: one year from despatch.
Gene Name:	phytanoyl-CoA dioxygenase domain containing 1
Database Link:	Entrez Gene 254295 Human Q5SRE7
Background:	PHYHD1 probably acts as alpha-ketoglutarate-dependent dioxygenase (By similarity).
Synonyms:	MGC16638
Note:	Molecular Weight: 32411 Da



[View online »](#)

Product images:

Western blot analysis in SK-BR-3 cell line lysates (35ug/lane) using PHYHD1 antibody. This demonstrates the PHYHD1 antibody detected the PHYHD1 protein (arrow).